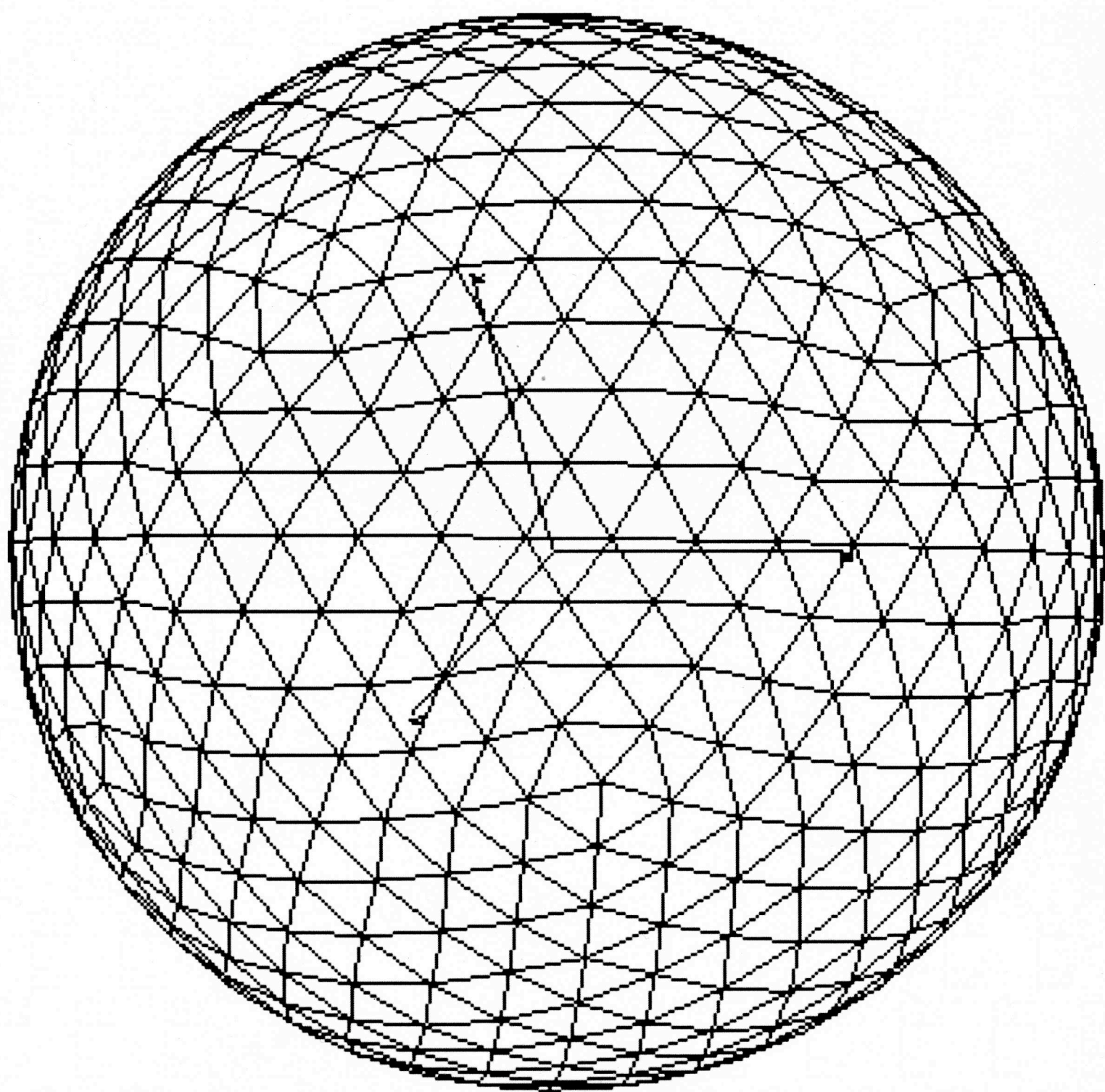
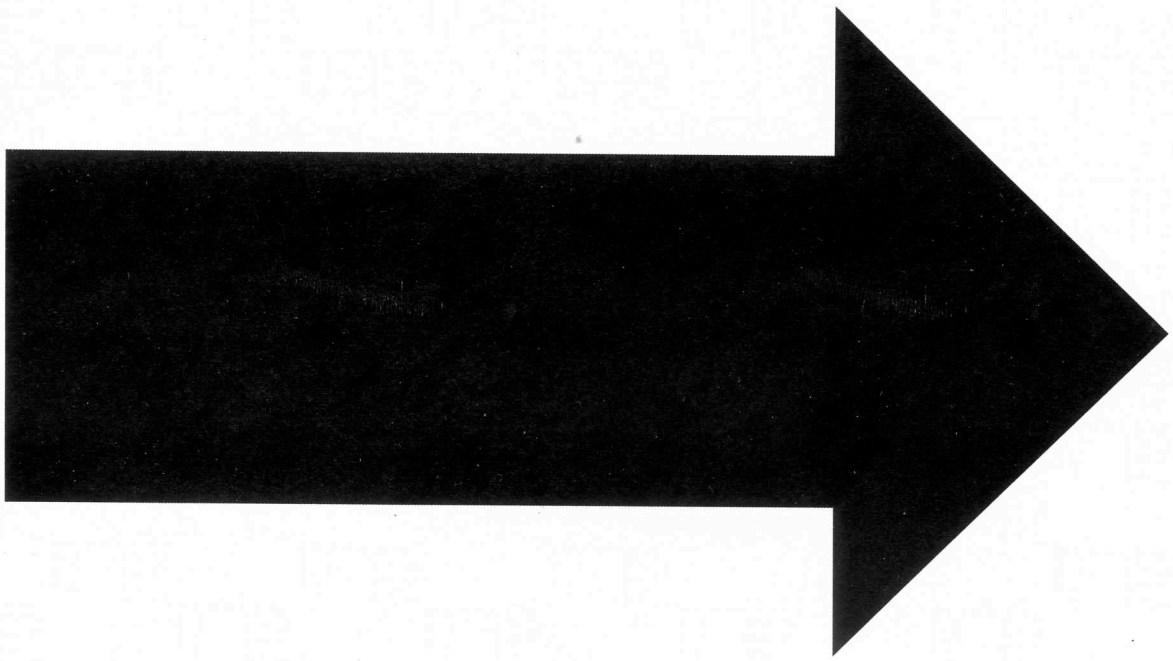


OSCULATE





OSCULATE

THE NEW TANGENT – THE FUTURE

AN EDUCATIONAL DISPLAY

KINDEST THANKS TO HERMA FRANCE, WEST GREEN LEARNING CENTRE
AND HARINGEY SOLIDARITY GROUP FOR THEIR HELPFULNESS AND
GENEROSITY

2018

END YEAR

END YEAR IS YEAR ZERO. HISTORY IS MEASURED AS MINUS OR PLUS END YEAR – HOW MANY YEARS BEFORE OR HOW MANY AFTER.

ALMOST NOTHING IS KNOWN ABOUT THE YEAR ITSELF. ANYONE OUTSIDE IN 2018 IS NO LONGER LIVING.

MOST OF THE INFORMATION WE HAVE ABOUT THE WORLD PRE - END YEAR TAKES THE FORM OF TESTIMONIES FROM MEMBERS OF THE INTERMEDIATE COLLECTIVE- THE 200 INDIVIDUALS WHO LIVED IN THE NATION STATES OF THE NORTHERN HEMISPHERE AND MADE AN EXODUS TO THE V.M.L.S PERIMETER BEFORE TOTAL COLLAPSE.

INTERMEDIATE COLLECTIVE MEMBER AKLO TEN HERE GIVES HIS TESTIMONY TO YOU IN MOVING IMAGE FORM. >>>

THE BASIC FACTS AS WE KNOW THEM ARE AS
FOLLOWS:

ECOLOGICAL COLLAPSE HAD BECOME AN IRREVERSIBLE CERTAINTY. MANY OF THE SYMPTOMS OF THIS COLLAPSE FIRST EMERGED IN THE SOUTHERN HEMISPHERE AROUND 2015 (AFRICAN CRITICAL STAGE).

THE MOST POWERFUL STATES ATTEMPTED TO HELP THE SOUTH WITH SUPPLIES OF FOOD AND WATER, EVENTUALLY WITH AN ATTEMPT TO EVACUATE ALL DESERT AND SUB-DESERT AREAS.

THESE EFFORTS WERE ULTIMATELY INSIGNIFICANT BUT WERE IT NOT FOR THE AID, THE ERITEANS MAY HAVE DIED OF UV EXPOSURE BEFORE THEY ENGAGED IN THE SIGNA – SOMA TRANSFER THAT BEGAN THE GROWTH OF THE MEMBRANE.

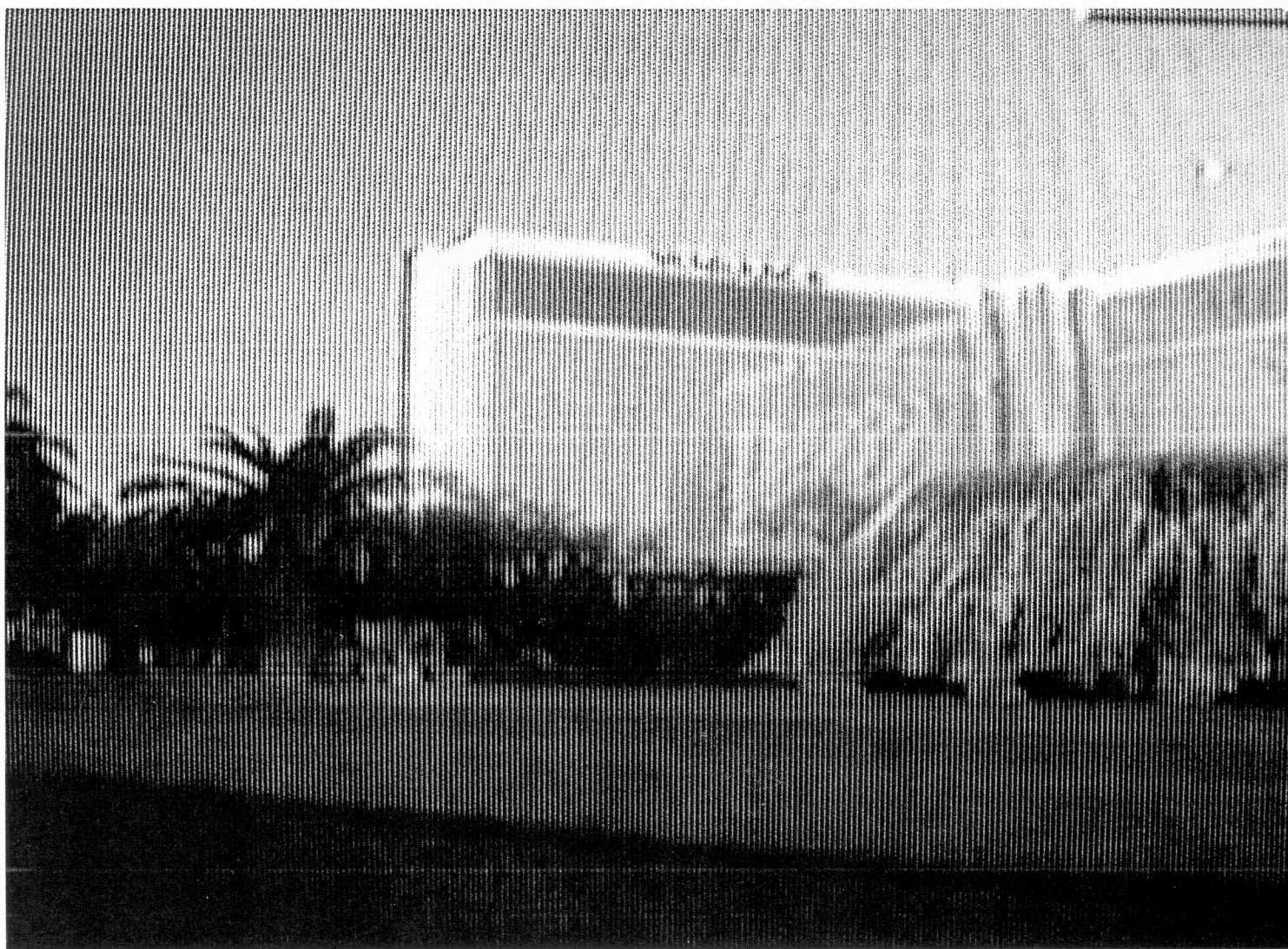
BY EARLY 2018 THE FIRST STAGES OF COLLAPSE BEGAN IN THE NORTH: MASS FLOODING AND ATMOSPHERE THINNING (CAUSING THE EXTINCTION MOST SPECIES FROM UV BURNS). THESE EVENTS TRIGGERED A CHAIN OF DISASTERS CULMINATING IN THE PLANET BEING LEFT –AS FAR AS WE CAN DISCERN- BARREN.

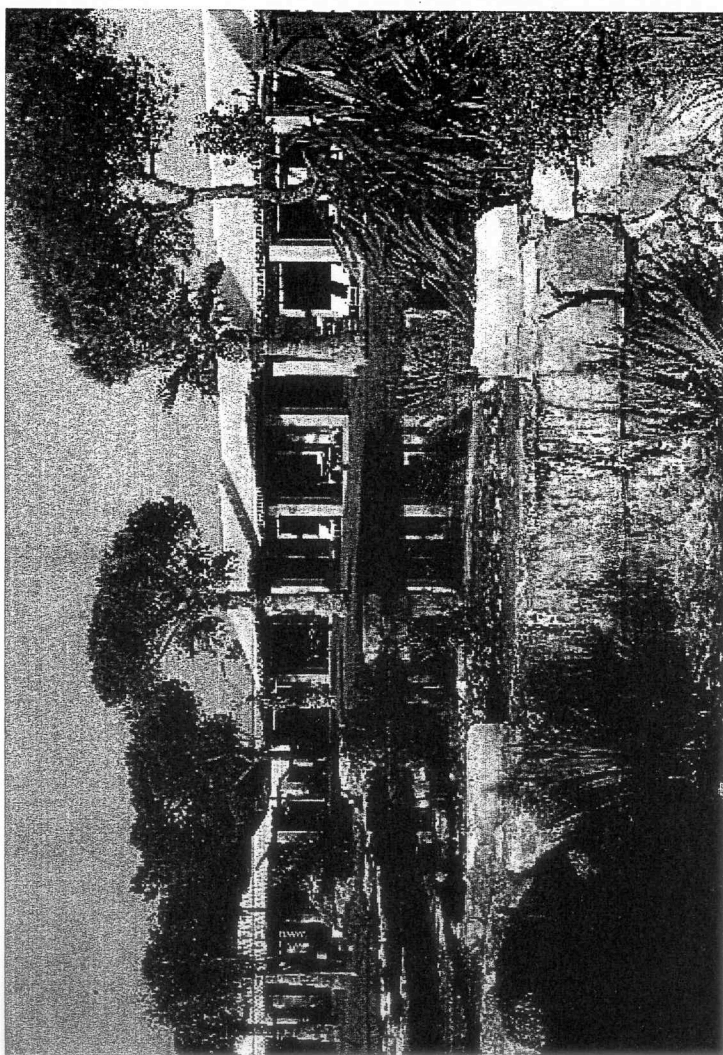
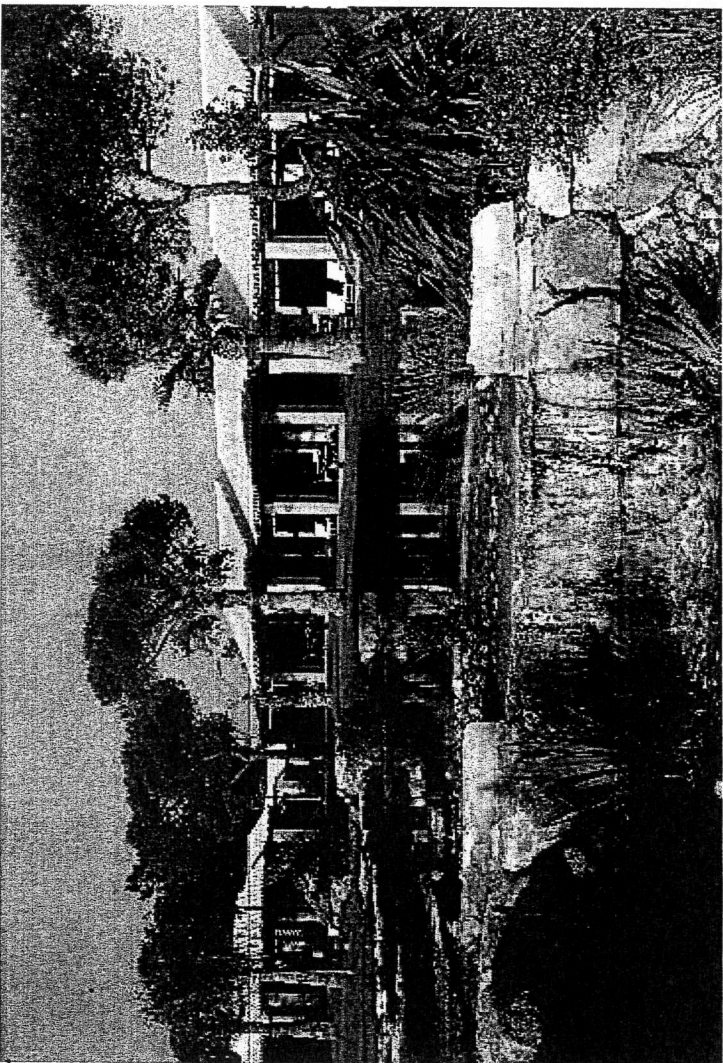
WE HAVE VERY RECENTLY DISCOVERED SOME PHYSICAL ARTEFACTS OF PRE – END YEAR AS A RESULT OF NEW OUTSIDE ATMOSPHERE FORMATION, CAPABLE OF SUPPORTING HUMANS IN HEAVY PROTECTION FOR AN HOUR AT A TIME.

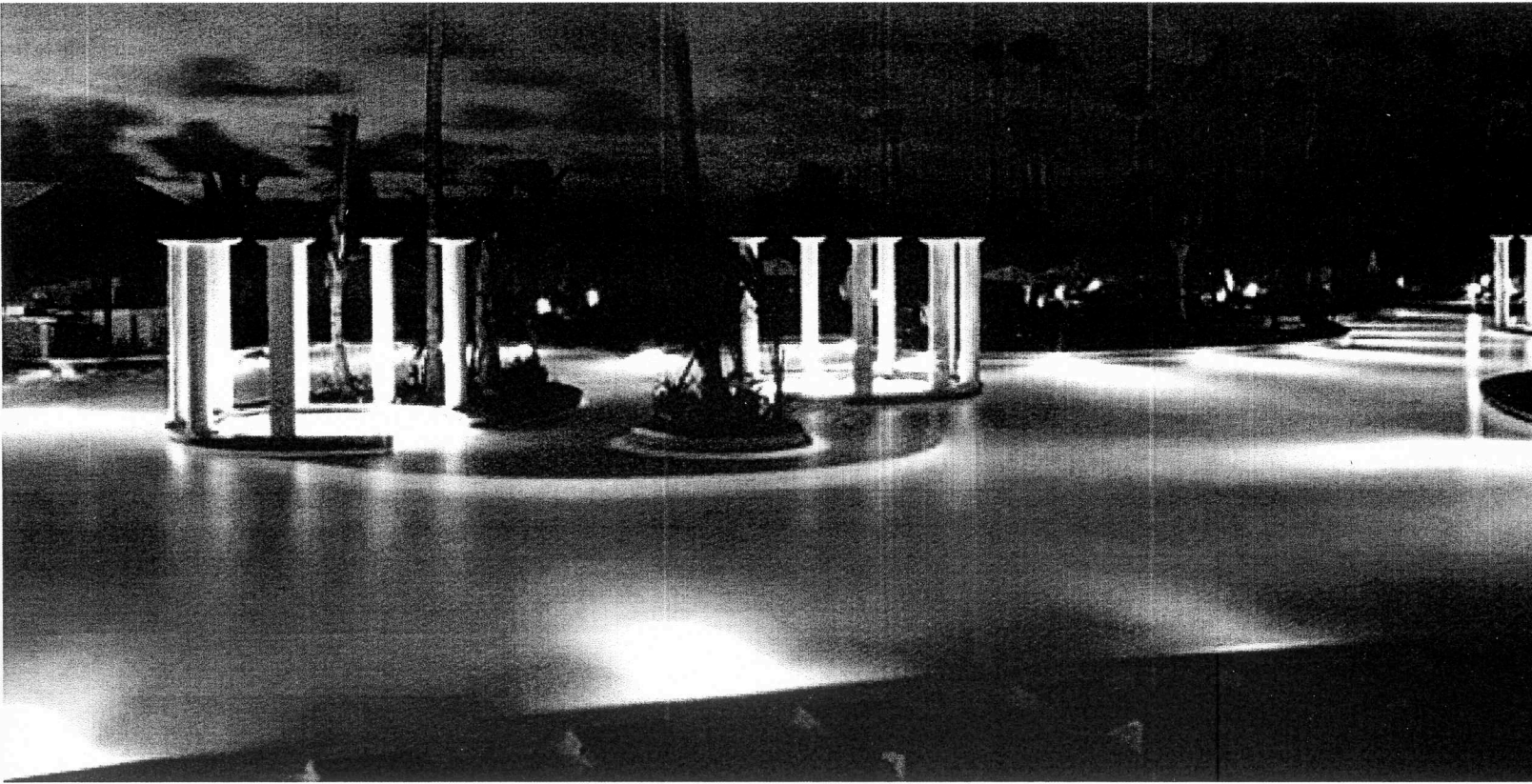
ALONG WITH THE 'ORGONIZE!' PAMPHLET A COLLECTION OF DIGITALLY PRODUCED IMAGES WERE DISCOVERED- AN INCREDIBLE WINDOW INTO LIFE AS THE INTERMEDIATES HAVE DESCRIBED IT. MANY SHOW PAST METHODS OF HABITAT DEVELOPMENT OFTEN BUILT UP INTO VAST CLUSTERS TO FORM CITIES. OTHER IMAGES SHOW FACES OF PRE – END YEAR PEOPLE IN A DIVERSE RANGE OF SETTINGS.

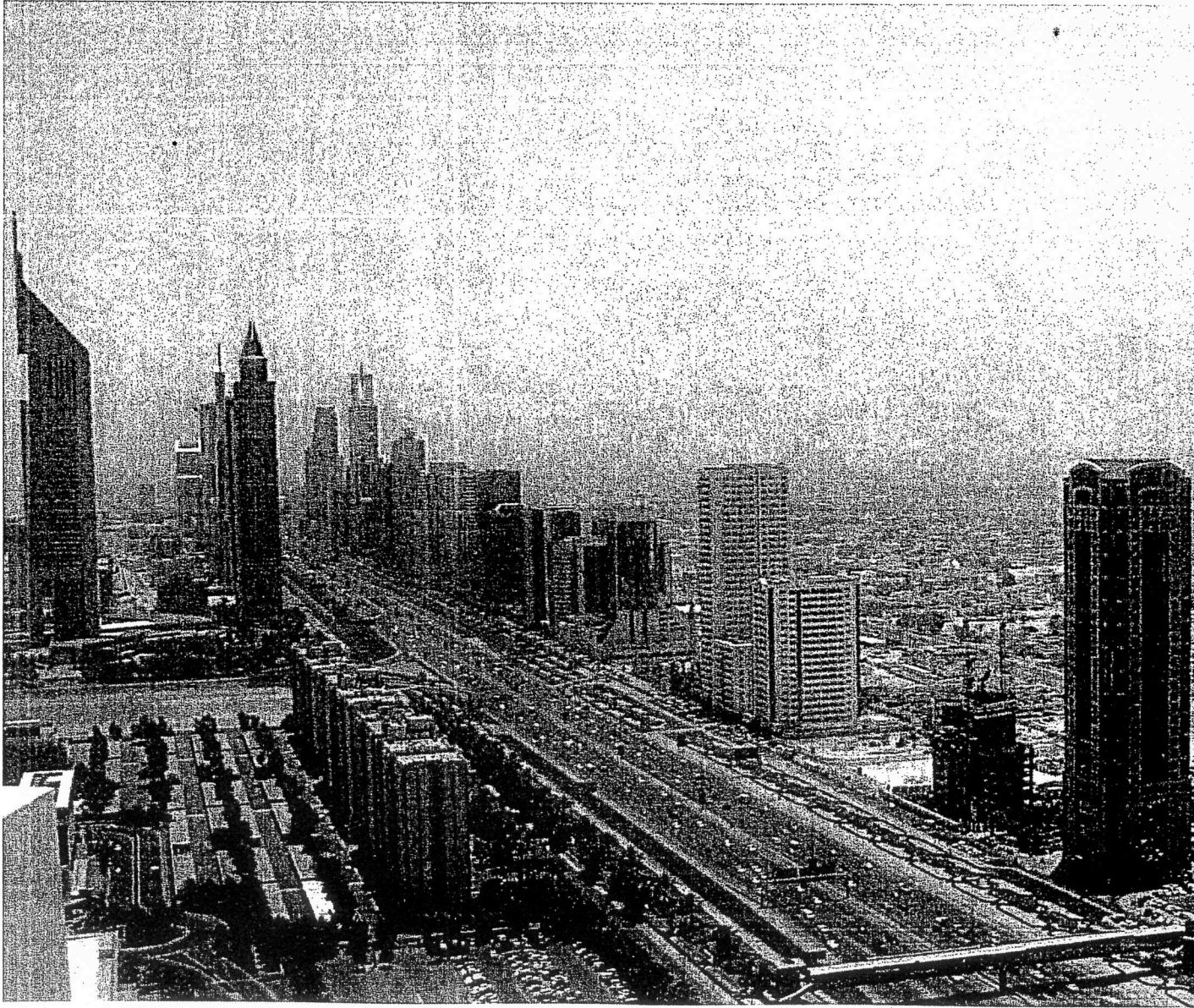
HERE IS A SELECTION OF THE RESTORED IMAGES, WE HAVE NOT
YET BEEN ABLE TO DATE ALL OF THEM ACCURATELY – SEE IF
YOU CAN IDENTIFY ANYTHING IN THEM THAT IS FAMILIAR TO
YOUR TIME.



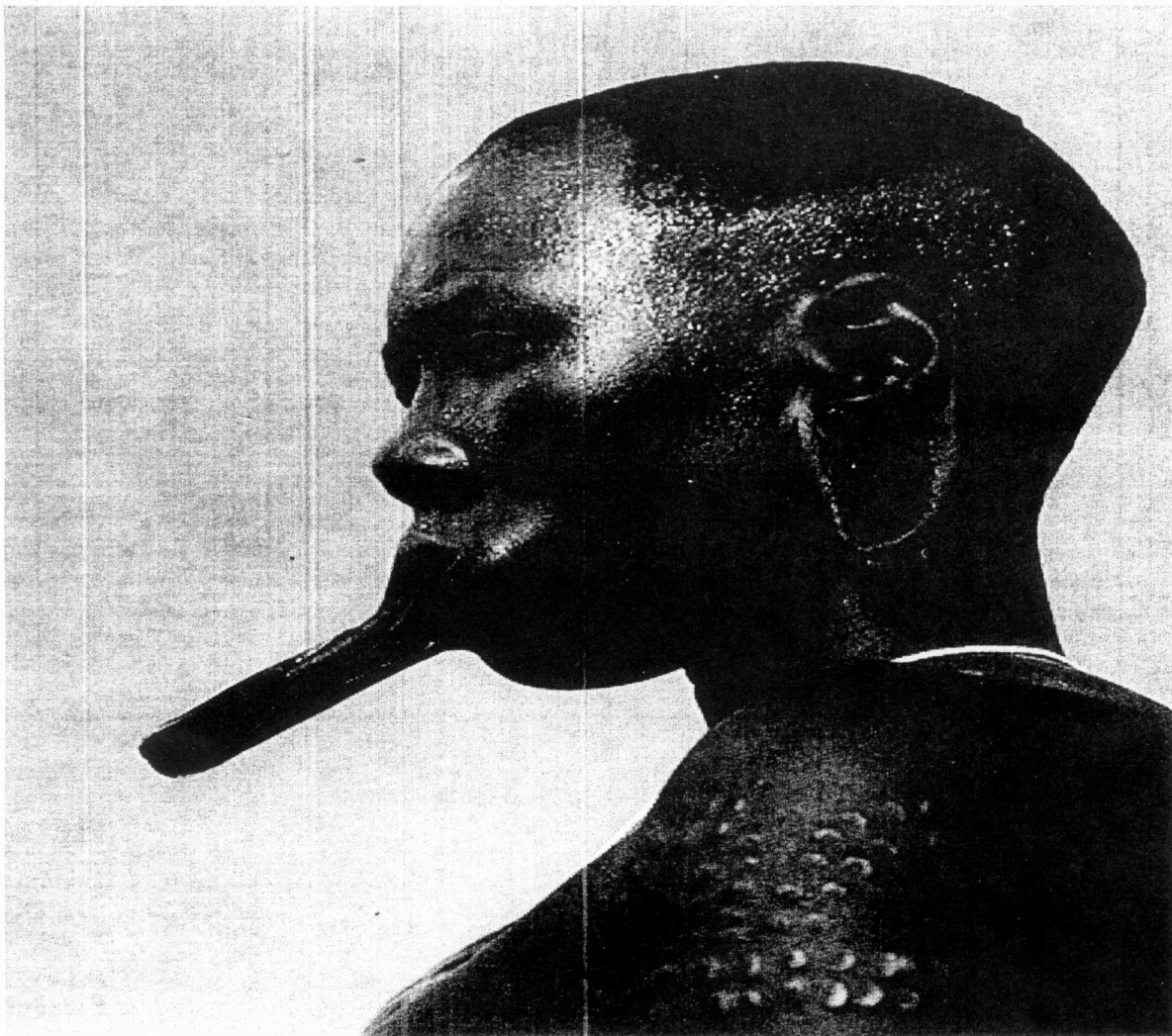










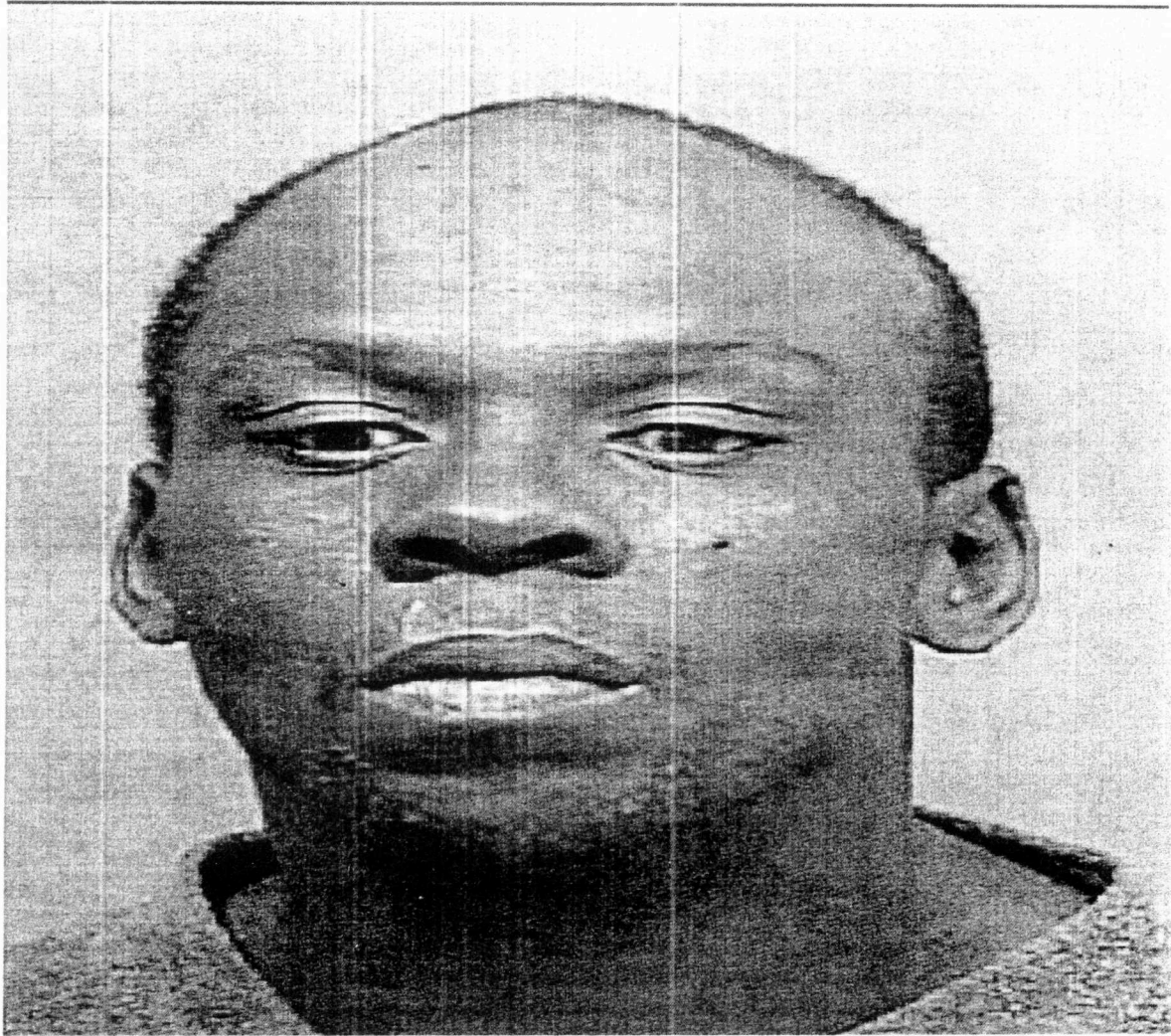














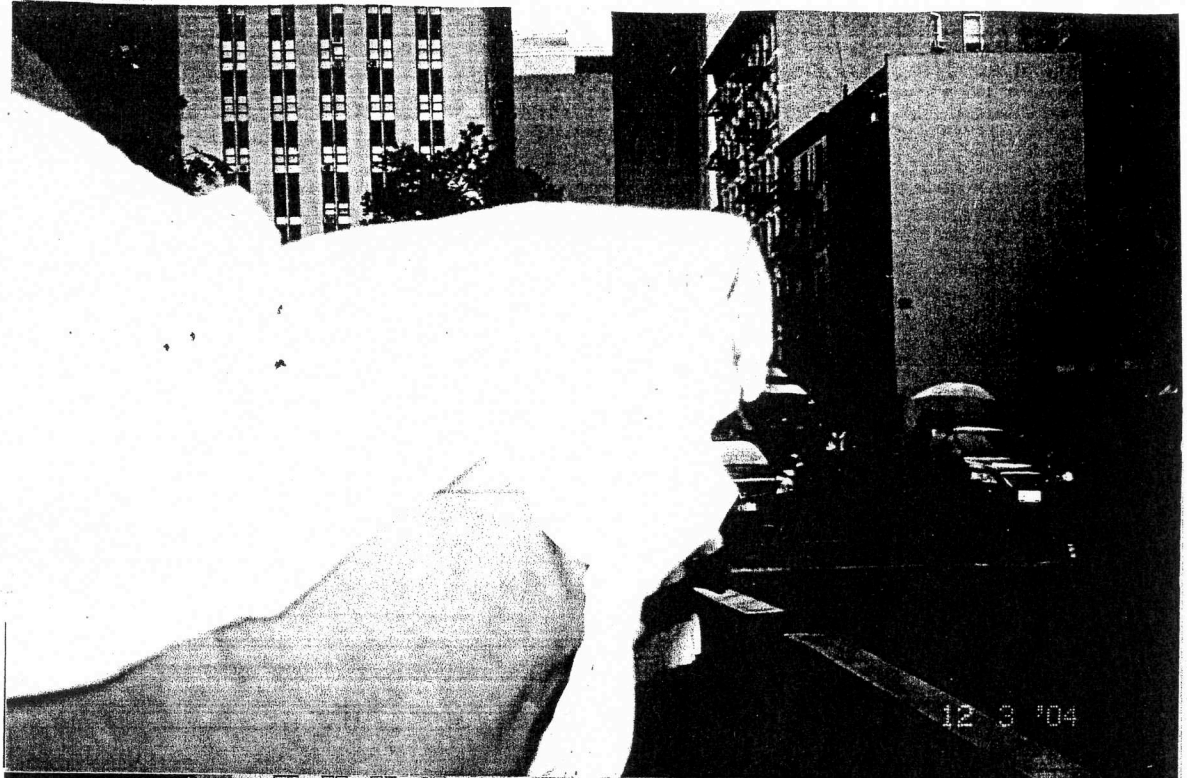


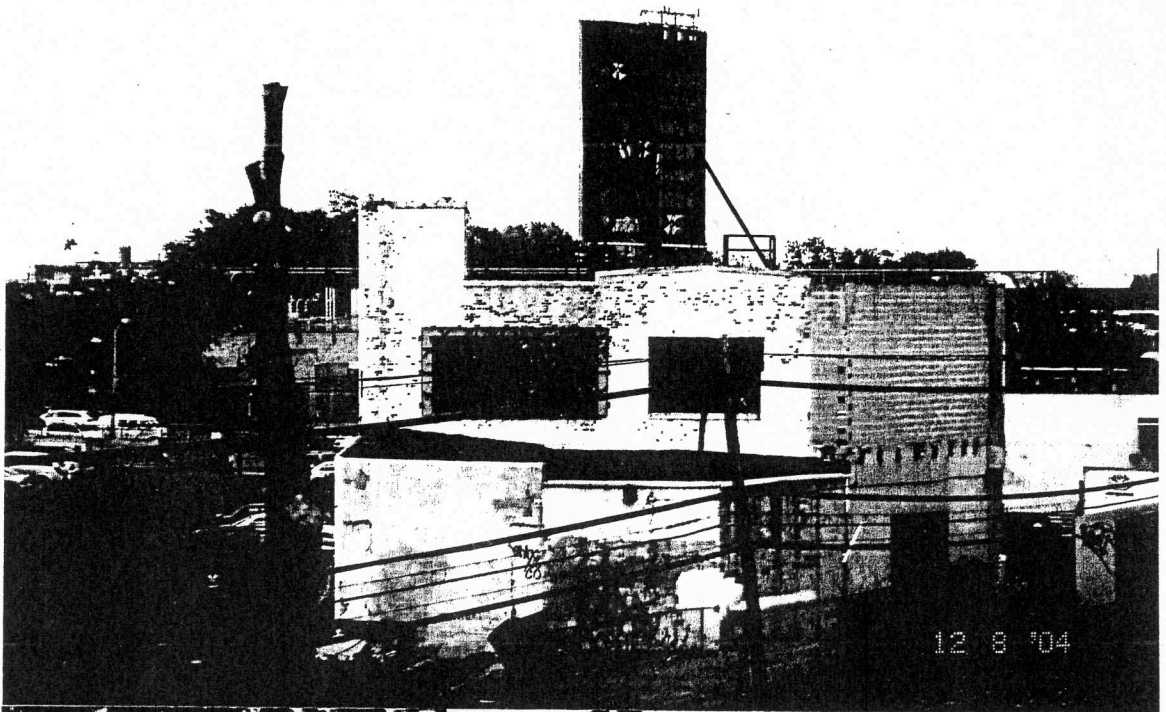
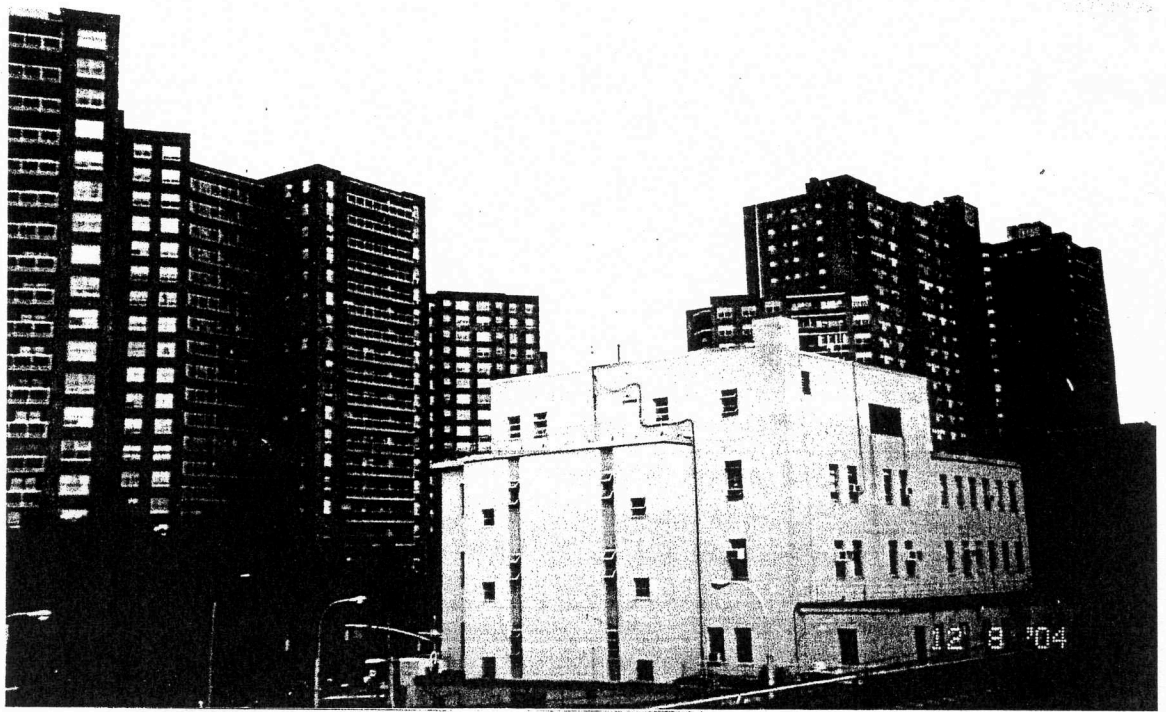


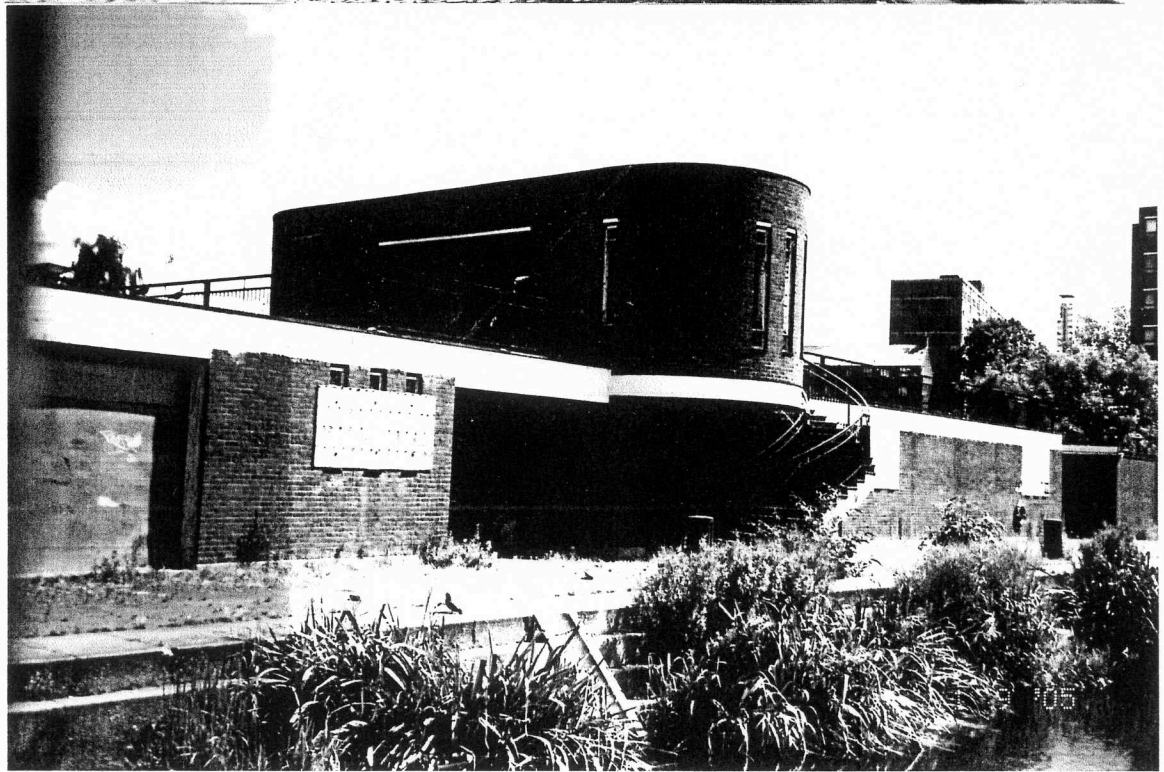
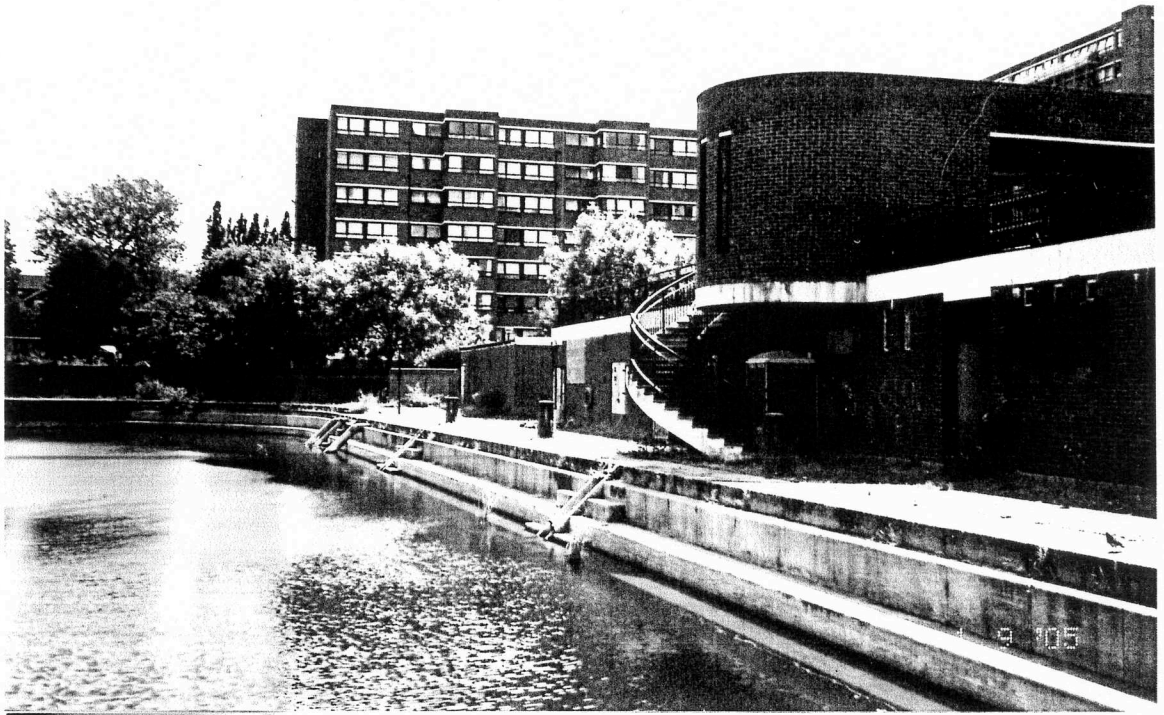


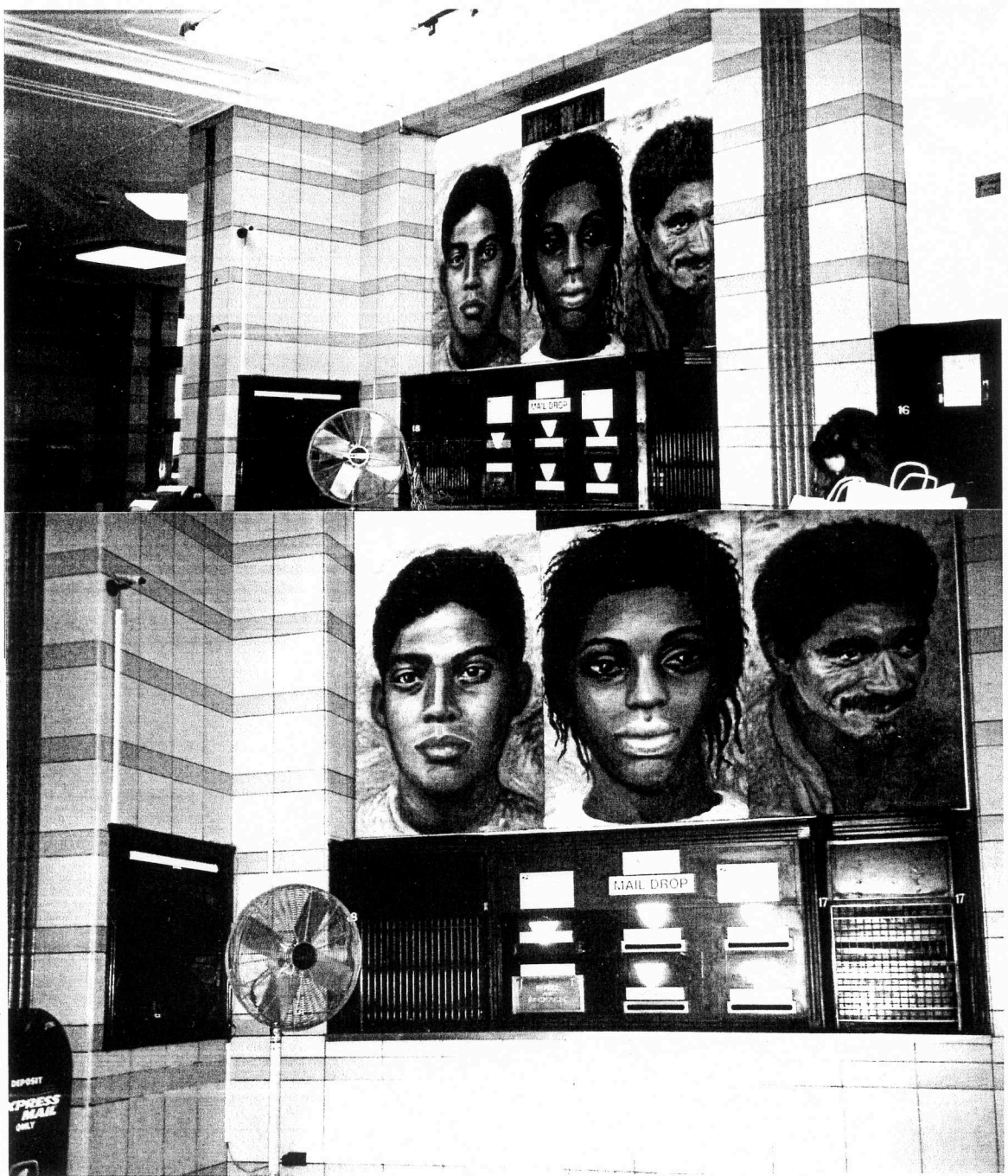


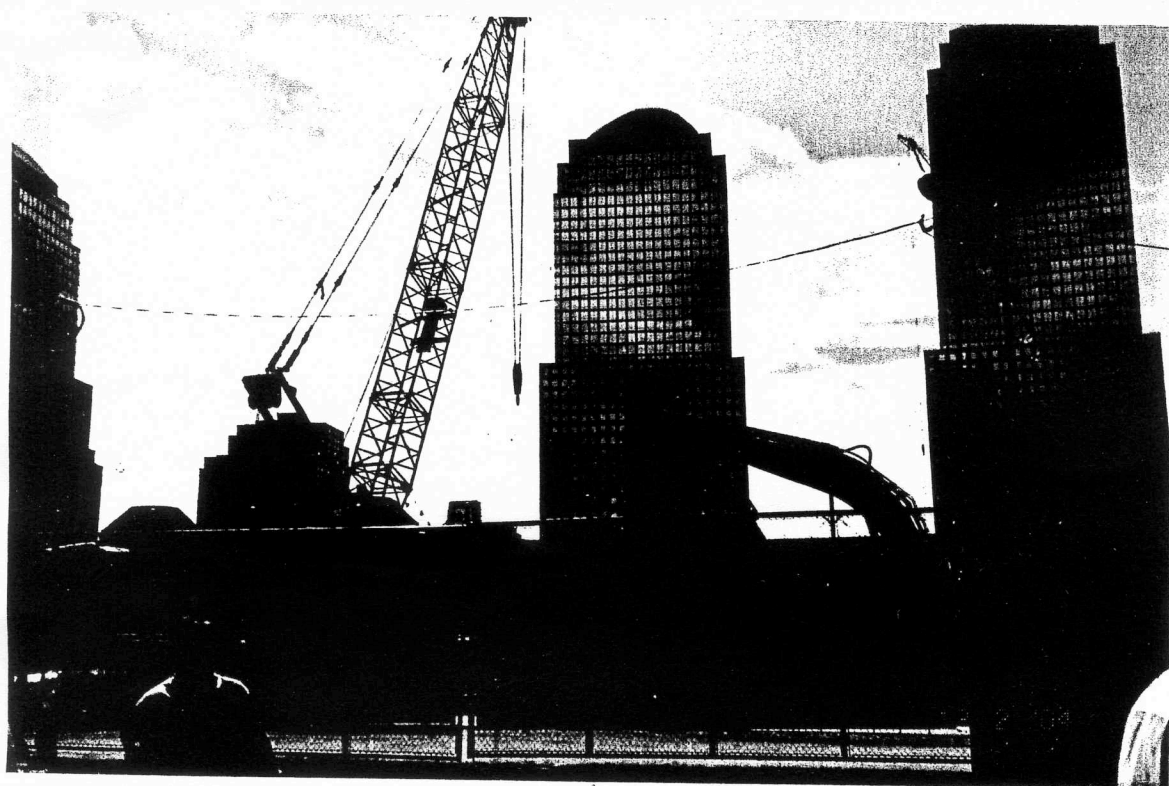
THIS SERIES HAVE SOMEHOW BEEN INSCRIBED ON CAPTURE
WITH THEIR DATE- "04" (2004).

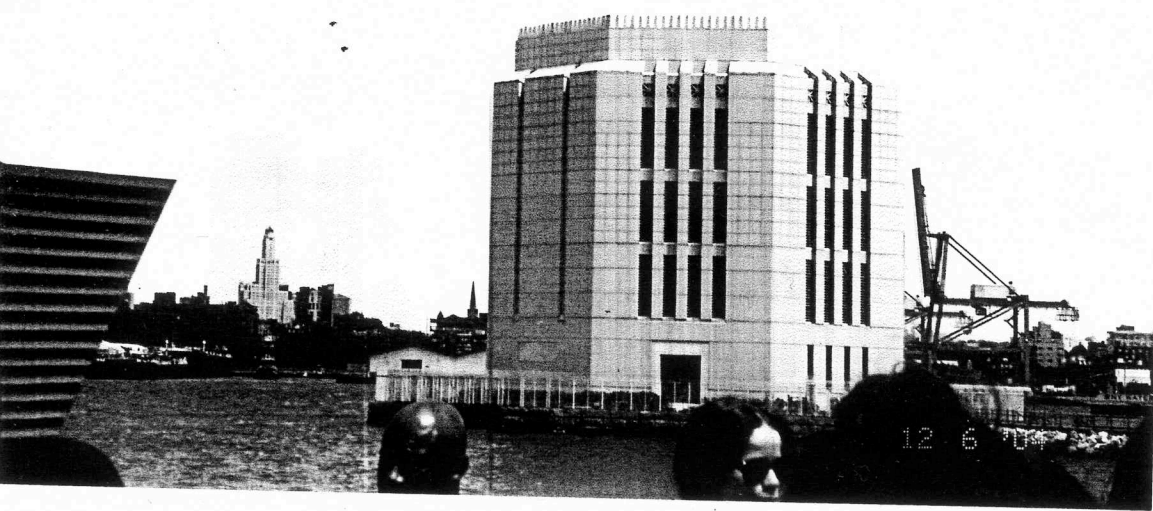
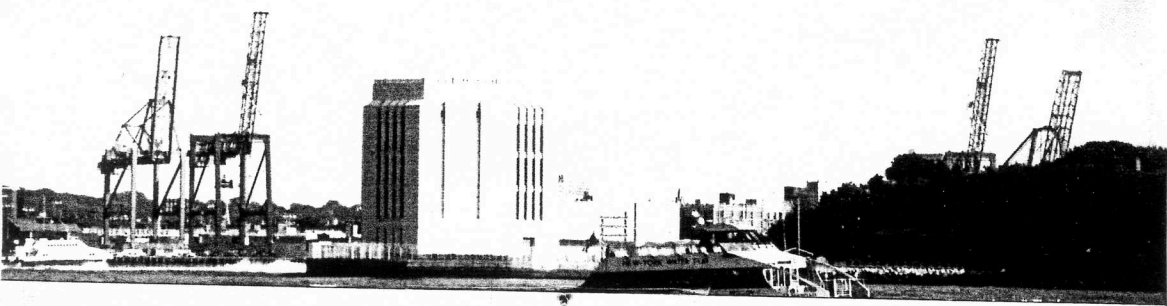


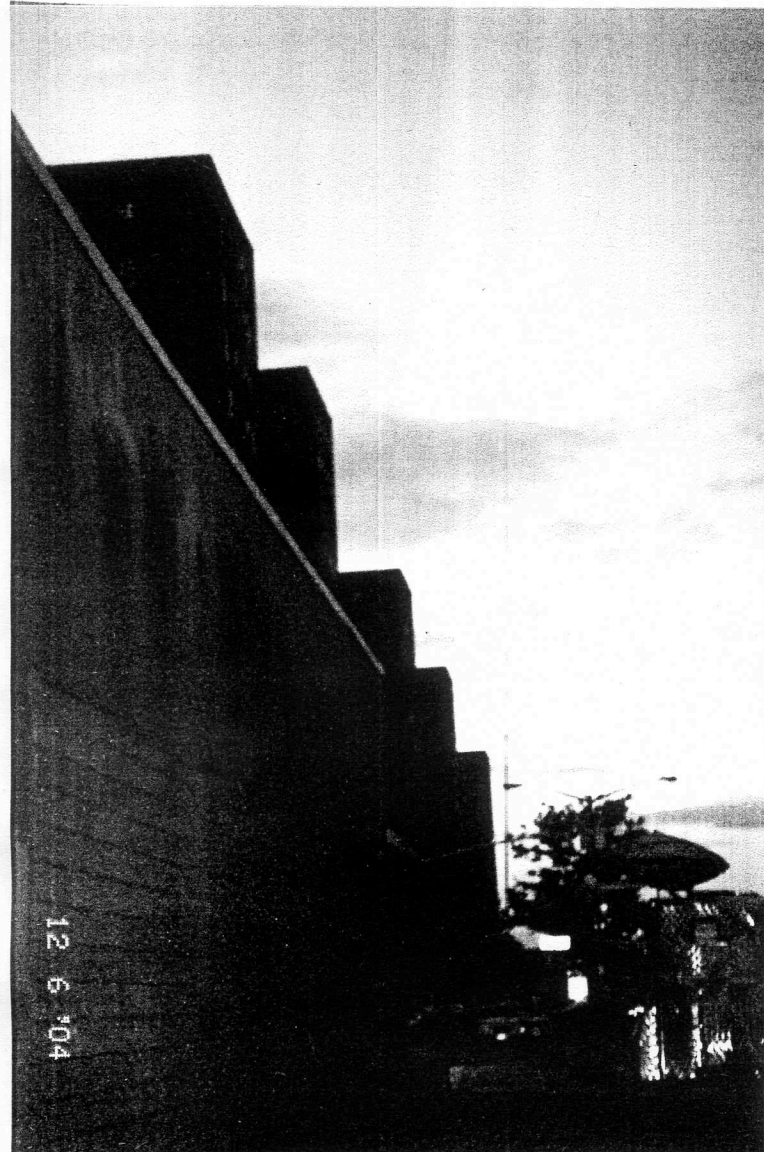






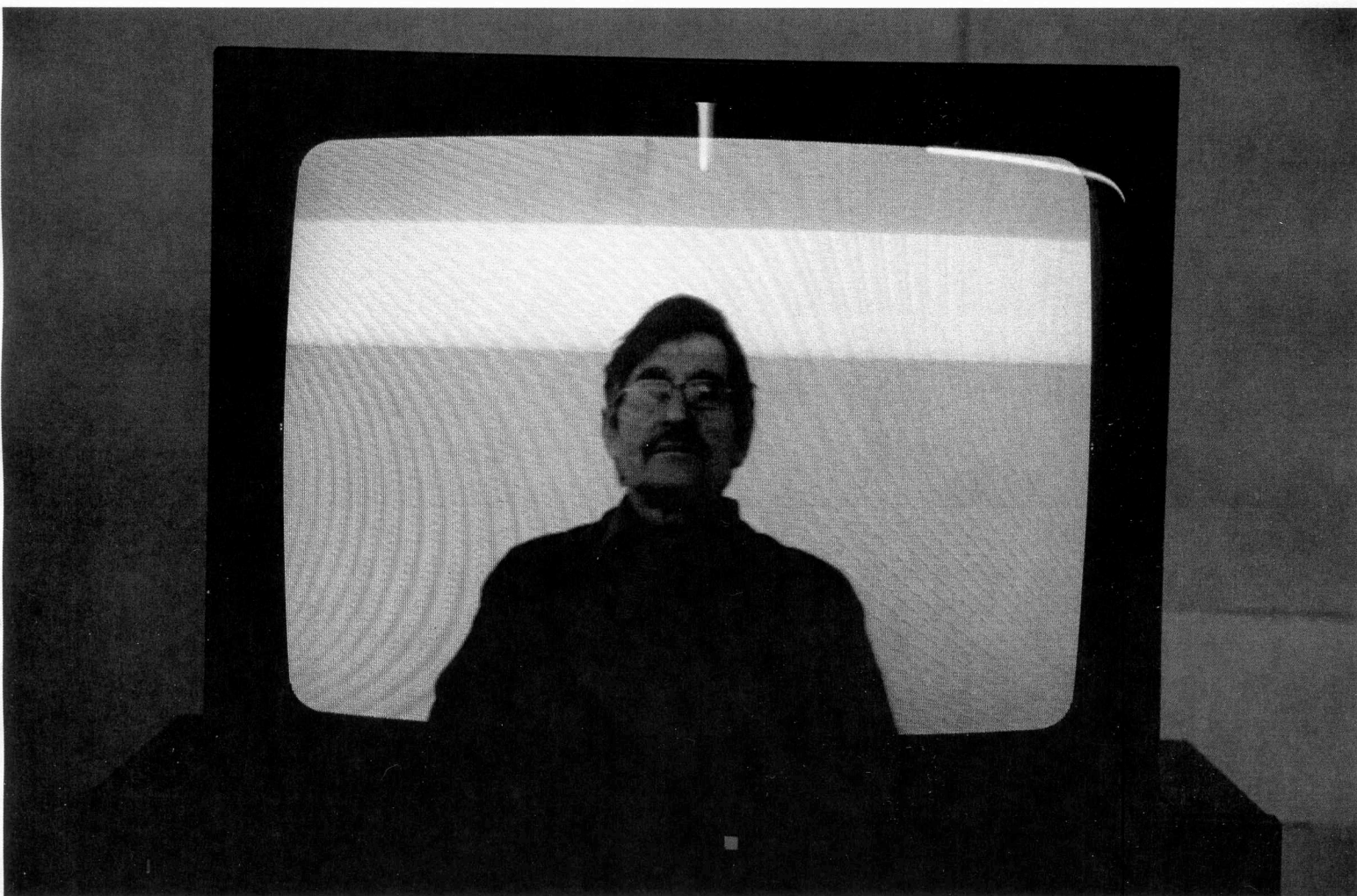






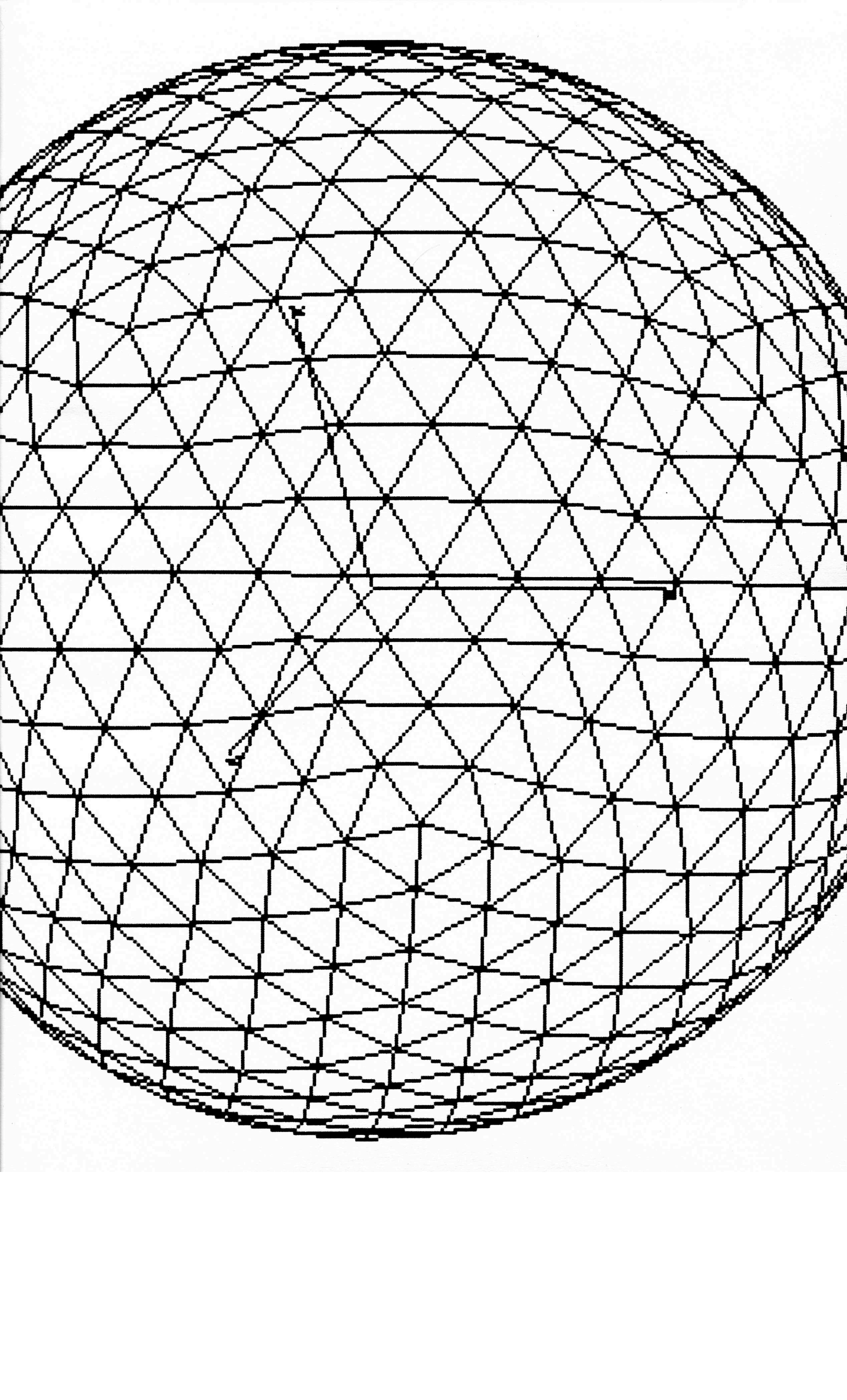
BROADCAST SEMINAR

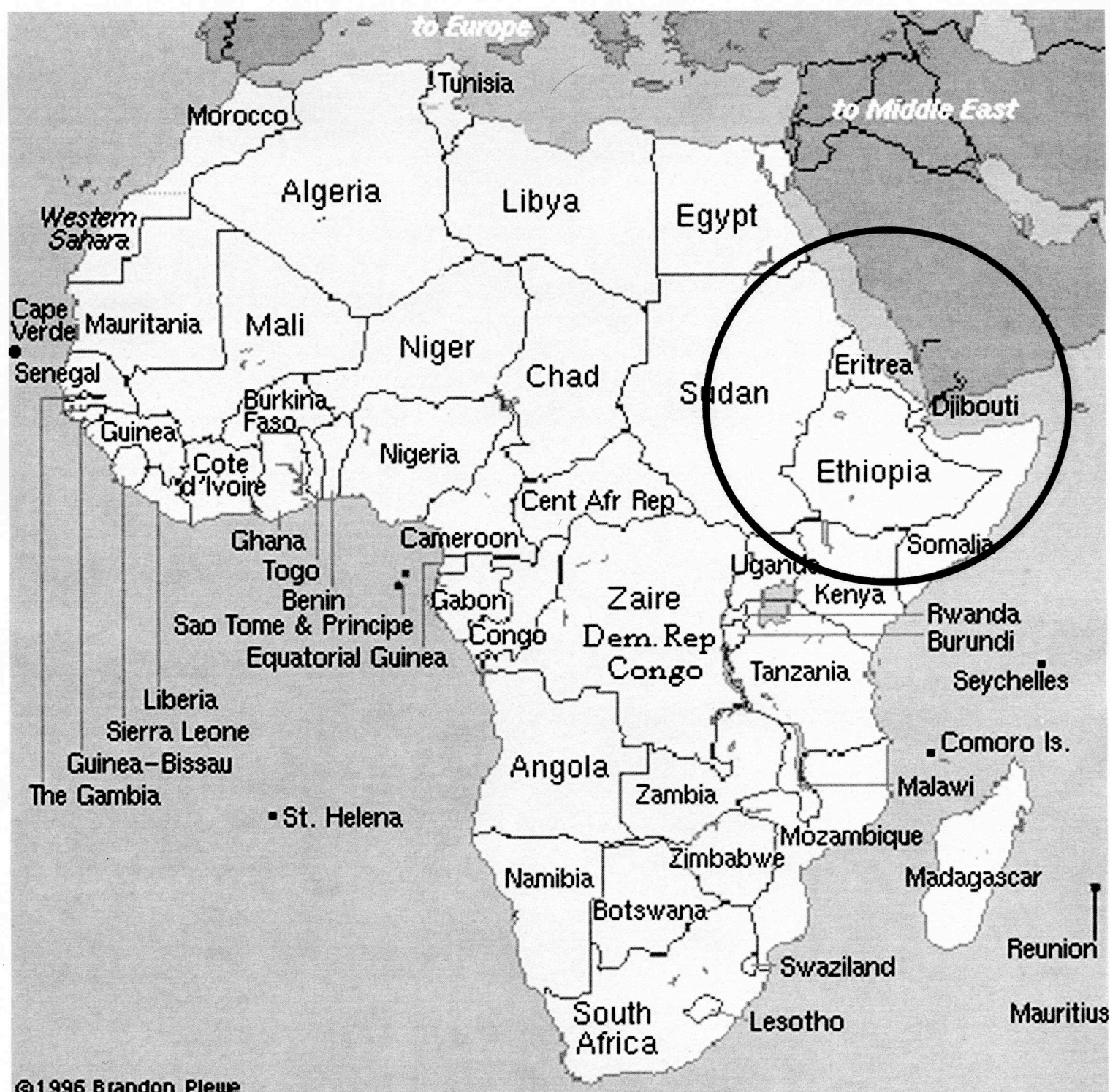
**INTERMEDIATE COLLECTIVE
REPRESENTATIVE AKLO TEN**

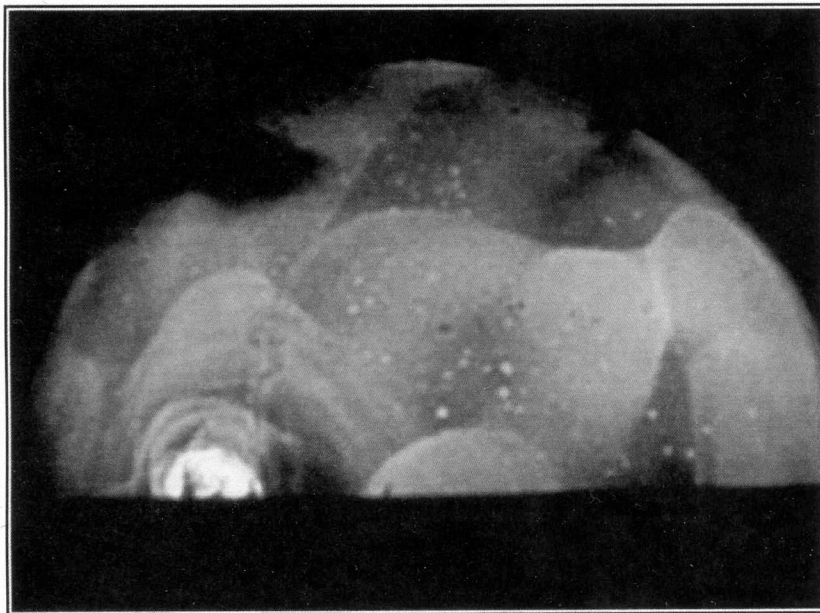
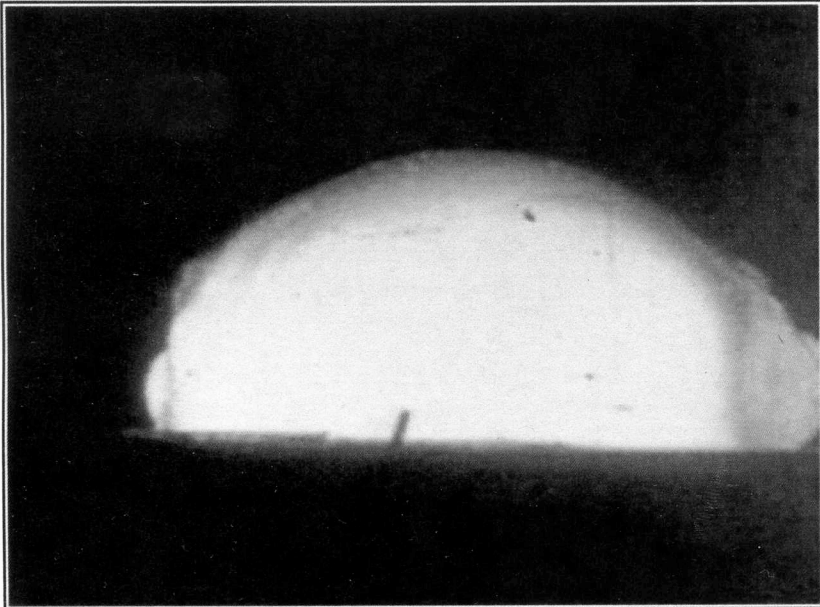
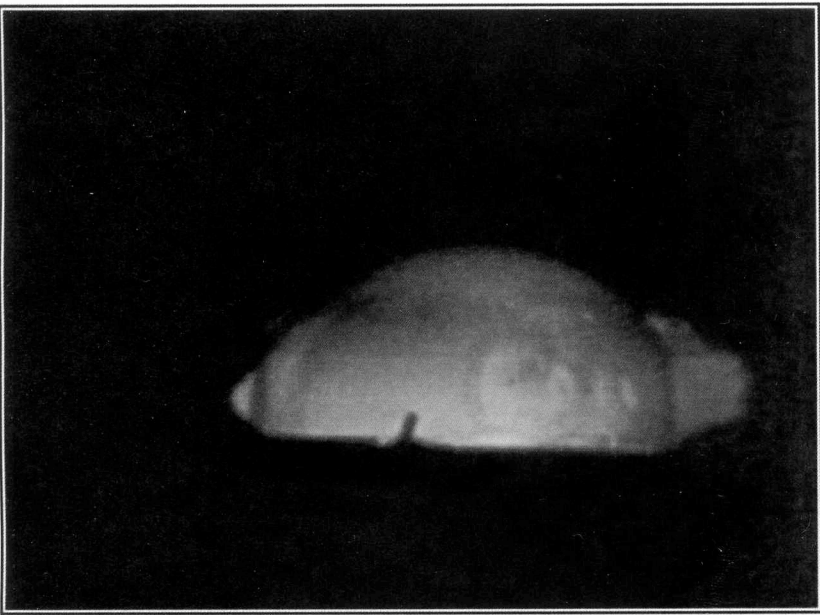




***VAST
MICRO-
SUSTAINING
LIFE
SUPPORT***







TAKEN AS A PROGRESS SHOT DURING ITS FORMATION, THIS IS THE ONLY KNOWN
IMAGE OF THE VMLS, VIEWED FROM OUTSIDE

MEMBRANE COMPOSITION

COMPOSITION OF THE LAYERS FROM OUTERMOST TO INNERMOST:

ABOVE GROUND SECTION

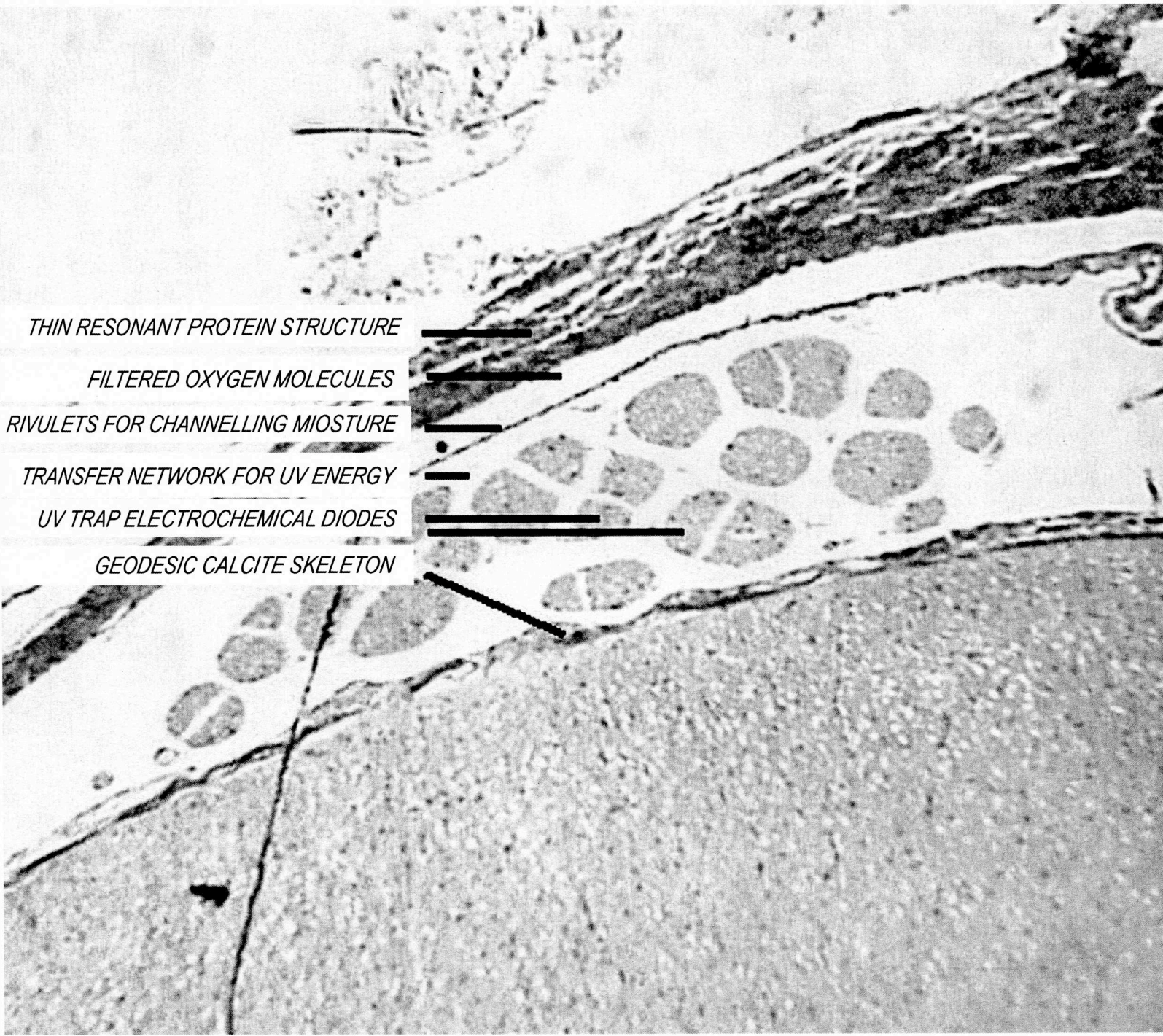
- 1 – POROUS PROTEIN STRUCTURE WITH THIN RESONANCE PROPERTIES. PROTEIN STRANDS MAKE UP A TEST FILTER, INTELLIGENTLY PASSING ONLY NEEDED MOLECULES (OXYGEN, MOISTURE) AND REFUSING TOXIC GASSES
- 2 – UV TRAPPING ELECTRO-CHEMICAL DIODES WITH CARRIER VESSEL NETWORK FOR DIVERTING UV ENERGY TO STORAGE POINTS
- 3 – TISSUE CONTAINING RIVULETS FOR CHANNELLING COLLECTED MOISTURE TOWARD GROUND LEVEL
- 3 - TOUGH GEODESIC CALCITE 'SKELETON' EMBEDDED IN SILICATE MESH

UNDERGROUND SECTION

- 1 – POROUS FINE CELL WEBBING FOR EXCHANGE BETWEEN INNER AND OUTER MINERALS, AIDING THE EVENTUAL GOAL OF SOIL ENRICHMENT.
- 2 - TOUGH GEODESIC CALCITE 'SKELETON'

SEABOARD SECTION (AT SECONDARY WATER RESOURCE I PERIMETER)

- 1 – RADIATION RESISTANT SILICATE NANOFILTER, ALLOWING A SLOW PROCESS OF TOXIN FILTRATION, AIDING THE EVENTUAL GOAL OF LOCALISED OCEAN PURIFICATION



THIN RESONANT PROTEIN STRUCTURE

FILTERED OXYGEN MOLECULES

RIVULETS FOR CHANNELLING MIOSTURE

TRANSFER NETWORK FOR UV ENERGY

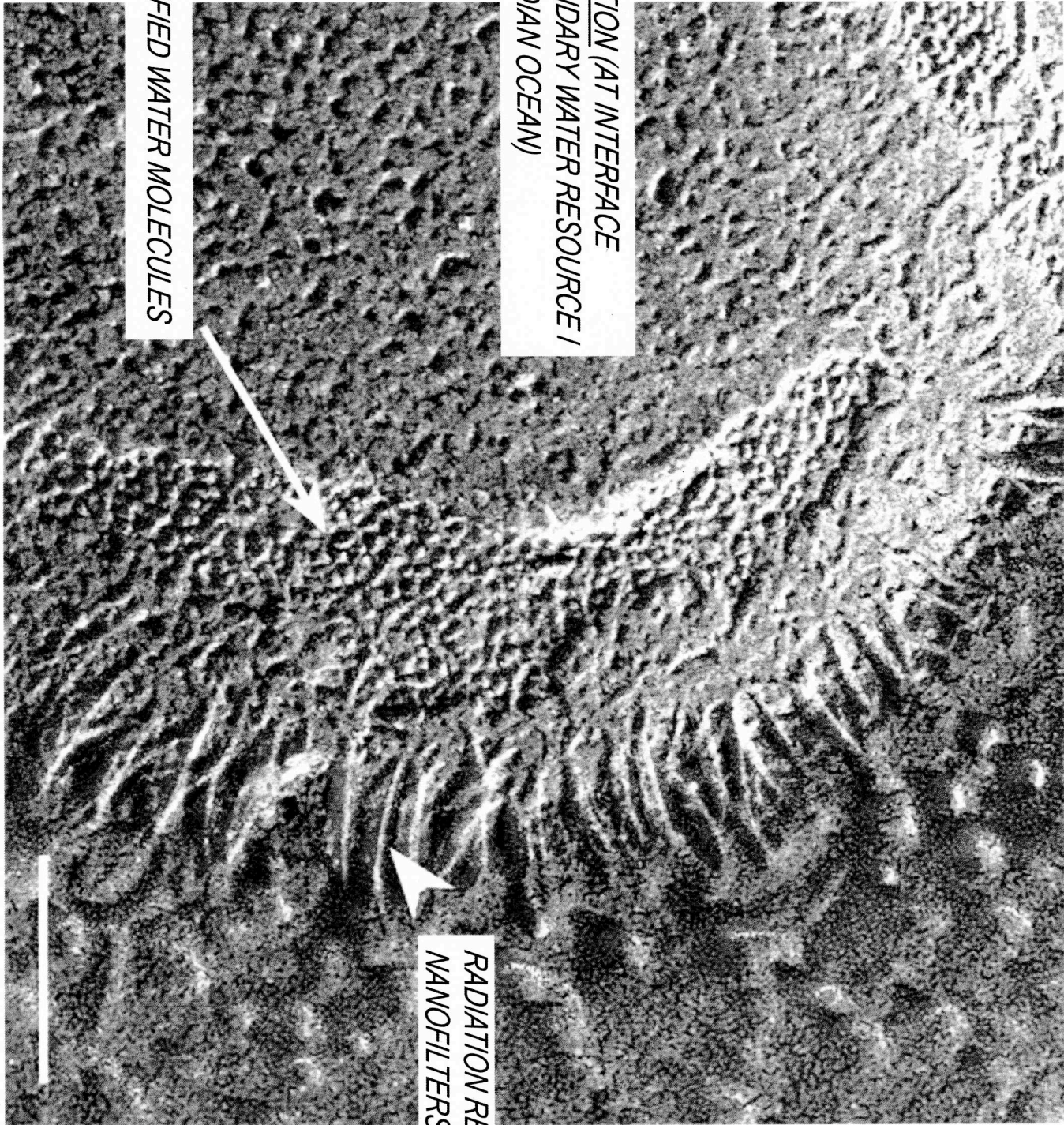
UV TRAP ELECTROCHEMICAL DIODES

GEODESIC CALCITE SKELETON

SEA BOARD SECTION (AT INTERFACE
BETWEEN SECONDARY WATER RESOURCE /
AND FORMER INDIAN OCEAN)

PURIFIED WATER MOLECULES

RADIATION RESISTANT SILICATE
NANOFILTERS



MEMBRANE DEVELOPMENT

AFTER ITS INITIAL GERMINATION THE V.M.L.S. MEMBRANE BECAME AUTONOMOUS IN ITS DEVELOPMENT. IT HAS NO CENTRAL POINT OF MENTAL OPERATION BUT SEEMS TO CONTAIN A DISPERSED, HOLISTIC STATE OF 'INTELLIGENCE'.

AROUND 2019 THE V.M.L.S BEGAN AN AUTONOMOUS EXPANSION TO ENCOMPASS PART OF THE FORMER INDIAN OCEAN IN ORDER TO BEGIN PURIFICATION OF THE PLANET'S OCEANS AND INCREASE WATER SUPPLY INSIDE THE MEMBRANE. THIS BECAME 'SECONDARY WATER RESOURCE I'.



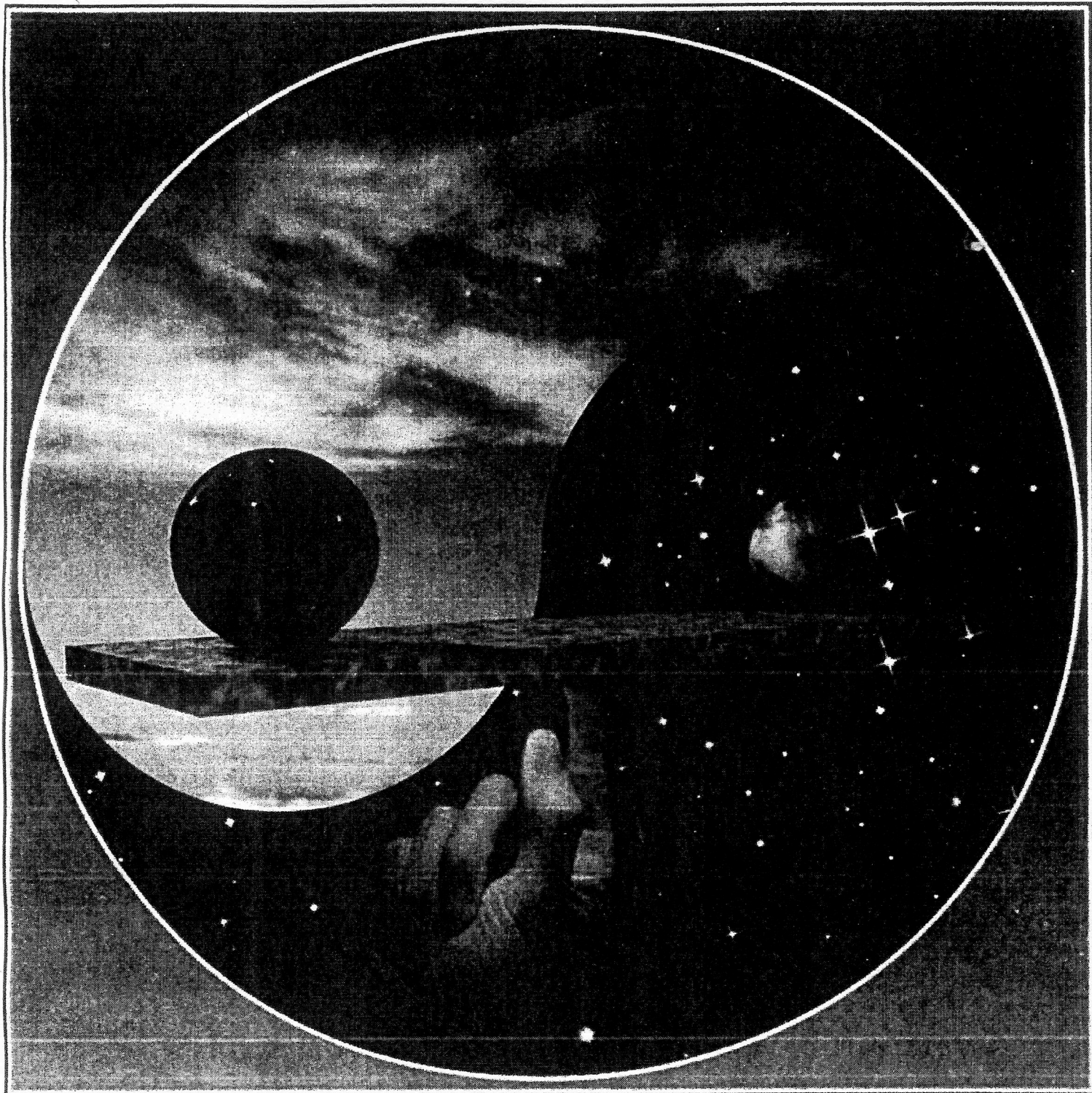
AN ARTIST'S IMPRESSION OF THE VIEW FROM OUTSIDE

EXPEDITIONS

A THIN OUTSIDE ATMOSPHERE HAS BEGUN TO RE-FORM. ALTHOUGH OXYGEN IS SPARSE AND TEMPERATURES STILL EXTREME, TWO SMALL INVESTIGATIONS OUTSIDE HAVE BEEN MADE POSSIBLE.

THE FIRST WAS SOUTH, OUT INTO FORMER UGANDA WHERE THE 'ORGONIZE' PAMPHLET WAS DISCOVERED.

THE SECOND WAS NORTH WEST TOWARD THE BORDERS OF THE FORMER UNITED ARAB EMIRATES. HERE THE FIRST REMAINS OF BUILT HABITATS WERE REVEALED. VERY TALL OBELISK LIKE STRUCTURES COMPOSED OF IRON AND CARBON ALLOY, CALCIUM CARBONATE, SILICA, CLAY, SAND, ALUMINIUM AND GLASS. BELIEVED TO HAVE CONTAINED COMMERCE-BASED ORGANISATIONS, SEVERAL HUMAN-MADE ITEMS WERE RETRIEVED FROM THEIR INTERIORS INCLUDING THE PIECE ON DISPLAY (SEE FIG. 1). ITS COMPOSITION IS CARBON AND PETROLIUM BASED PLASTICS WITH INTERNAL SILICONE AND METAL ALLOY ELEMENTS.



EVERY PART CONTAINS THE WHOLE OR
THE WILL OF THE WHOLE

THE WHOLE IS ENFOLDED IN THE PARTS
THE PARTS UNFOLD INTO THE WHOLE

SIGNA - SOMA TRANSFER

= THE SHIFT THAT MADE POSSIBLE THE DEVELOPMENT OF THE V.M.L.S AND ULTIMATELY THE CONTINUATION OF ORGANIC LIFE ON EARTH

KNOWN IN THE V.M.L.S AS 'OUCOULOUM'. IT IS MOST SIMPLY DESCRIBED AS A DIRECT TRANSFER OF 'MEANING' BACK AND FORTH BETWEEN MATTER AND MENTAL CONSCIOUSNESS. THE WORD MEANING IS USED AS A LOOSE EQUIVALENT: IT IS NOT A CASE OF LITERAL INFORMATION PASSING FROM ORGANIC MATTER TO HUMAN CONSCIOUSNESS, BUT RATHER A 'MAKING TANGIBLE' OF THE GENERAL (QUANTUM) STATE OF THINGS, OF "EACH PART OF THE WHOLE CONTAINING THE WHOLE WITHIN IT".

IT IS THOUGHT THAT THE PROCESS BEGINS WITH AN 'EXCHANGE' ON A VERY SMALL LEVEL (IN THE CASE OF THE V.M.L.S'S GERMINATION, WITH TWO ERITREAN GIRLS) AS A VERY SUBTLE DIALOGUE BETWEEN A PERSON AND THE ORGANIC MATERIAL IMMEDIATELY SURROUNDING THEM.

AN INFINITE REPEAT OF THE EXCHANGE IN THE FORM OF MUCH SMALLER (QUANTUM) SYSTEMS IS THEN TRIGGERED, DEVELOPING INTO A REPLICATING OF THAT 'EXCHANGE' THROUGH MASS CELL DIVISION. IN THE CASE OF THE V.M.L.S THIS RESULTED IN THE PAN CONTINENTAL 'INTELLIGENT' MEMBRANE WITH ITS MULTI-FUNCTIONING LAYERS.

WE HAVE SEEN LITTLE PHYSICAL EVIDENCE OF THE PROCESS SINCE THE V.M.L.S BLISTER BEGAN ITS OWN AUTONOMOUS GROWTH, LEAVING BEHIND THE NEED FOR HUMAN MEDIATION (AROUND 2020).

HOW DID IT COME ABOUT?

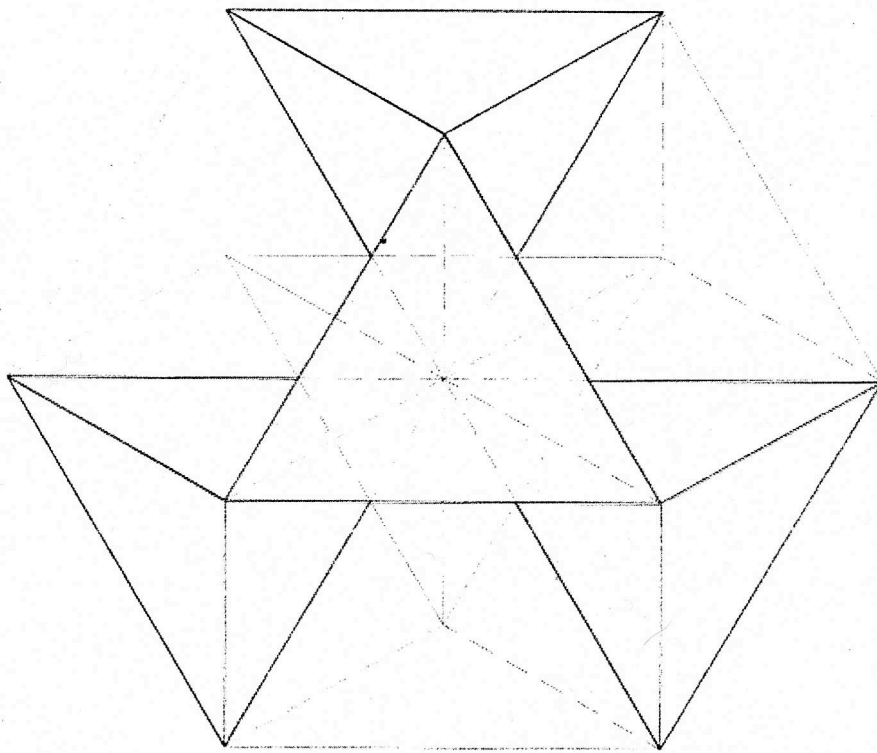
THE CENTRAL THEORY IS THAT ALTHOUGH THERE WAS NO PHYSICAL EVIDENCE OF SIGNA – SOMA TRANSFER BEFORE END YEAR 2018, THE 'LANGUAGE' THAT MAKES IT POSSIBLE HAS BEEN INHERENT IN HUMANITY ON A SUB-ARTICULATE LEVEL FOR MILLENNIA. IT ONLY BECAME EVIDENT (BEGAN ITS UNFOLDING) IN NORTH AFRICA OUT OF ACUTE NECESSITY AS END YEAR APPROACHED.

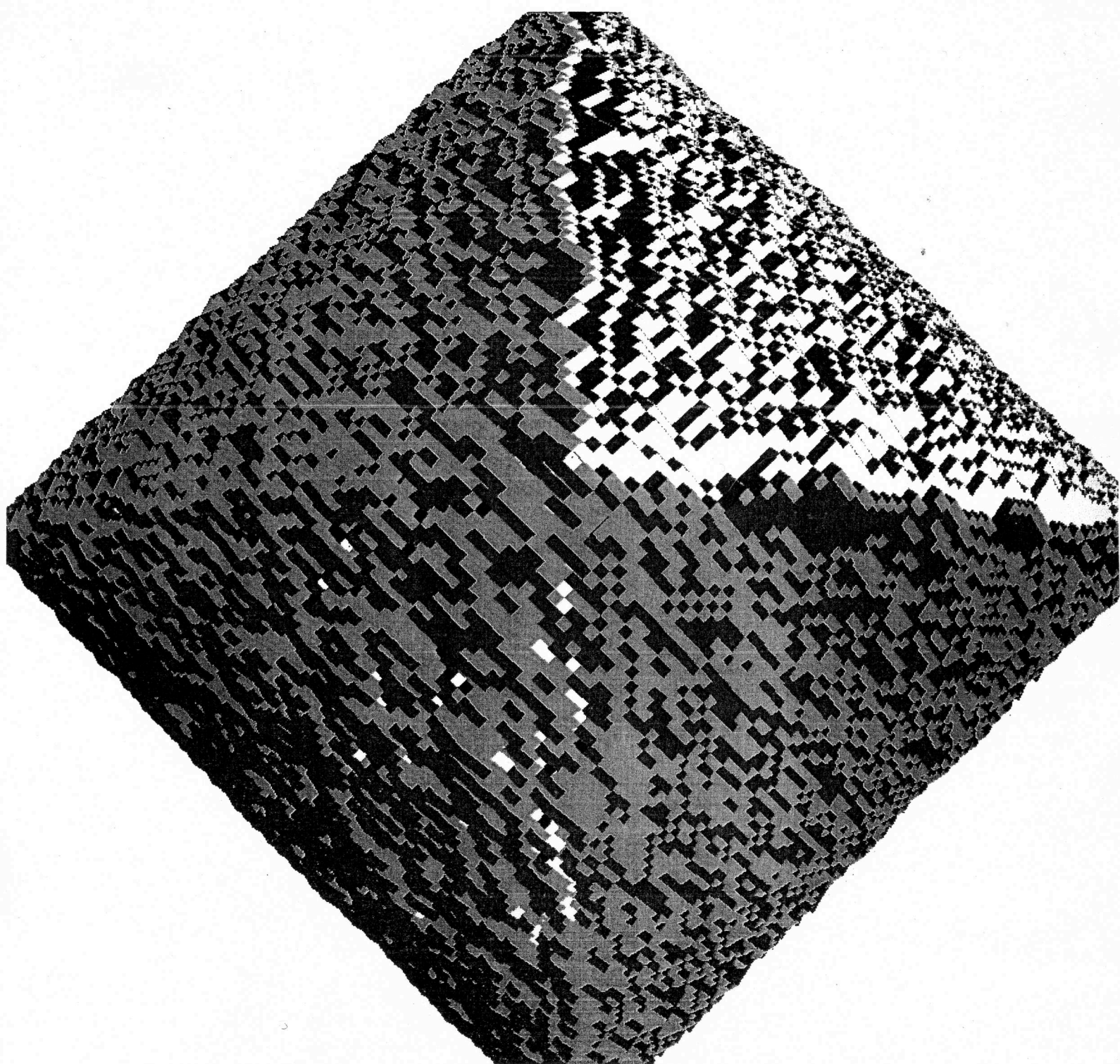
IT HAS BEEN DESCRIBED AS A "KIND OF COMMUNAL SUB-ARTICULATE PROGRAMMING".

WHY DID SIGNA – SOMA TRANSFER OCCUR FOR ONLY A FEW YEARS?

ONE THEORY GOES AS FOLLOWS: JUST AS ONE DOES NOT SEE THE LAWS OF CLASSICAL PHYSICS BREAK DOWN ON AN EVERYDAY LEVEL – ONLY ON A MICROSCOPIC OR A VAST LEVEL, SO ALSO THE USUAL DEFINED PARAMETERS BETWEEN ONE PART OF MATTER (HUMAN) AND ANOTHER (THE EARTH) ONLY BREAK DOWN WHEN ABSOLUTE DESTRUCTION OF BOTH IS VERY IMMINENT.

THERE HAS BEEN GREAT FRUSTRATION THAT THE CONDITIONS FOR OUCOULOUM HAVE NOT BEEN SUCCESSFULLY RECREATED DESPITE EXTENSIVE EXPERIMENTS WITH THE ERITEAN INDIVIDUALS INITIALLY INVOLVED.







THE ERITREANS, PHOTOGRAPHED CIRCA 2001, AGED 11

AFTER THEIR JOINT EXPERIENCE OF SIGNA – SOMA TRANSFER, THE SISTERS WERE THE FIRST TO MAKE A MEMBRANE CULTURE OUT OF ALGAE AND WHITE CLAY, USING THEIR OWN SHOULDERS AS TEST AREAS FOR UV FILTERING EFFICACY AND STIFFENING QUALITIES. IT IS WIDELY BELIEVED THAT THE GIRLS WERE THE FIRST HUMAN MEDIATORS OF A QUANTUM-LEVEL SIGNA –SOMA TRANSFER, A DIALOGUE BETWEEN MATTER AND THEMSELVES, A DIRECT QUANTUM MOVEMENT.

1989

ORGONISE

“ORGONISE AFRICA”

CONSIDERABLE EXCITEMENT SURROUNDED THE DISCOVERY OUTSIDE V.M.L.S PERIMETERS OF WRITTEN MATERIAL DATED FROM 10 YEARS PRE- END YEAR THAT SEEMED TO DESCRIBE A SIMILAR TRANSFER PROCESS:

***“ORGONISE AFRICA –
RESTORING AFRICA’S
NATURAL BEAUTY”***

THE TITLE OF THE PUBLICATION (CIRCA 1989) DISSEMINATED BY A LITTLE KNOWN CAMPAIGN GROUP IN DURBAN, SOUTH AFRICA.

AN EXTRACT FROM THE TEXT OF THE PAMPHLET:

“ORGONISE!”

**“THE EVIDENCE IS
EVERYWHERE OF THE
UNDERLYING OSCULATION BUT
OF COURSE, IT CANNOT YET BE
UNDERSTOOD”**

**“THINK OF AN EXPLICIT EVENT AND ITS
OPPOSITE, AN IMPLICIT EVENT –AND IMAGINE
TO TWO OCCURRING SIMULTANEOUSLY. NOW
YOU HAVE SOME IDEA OF WHAT WE CALL THE
OSCULATION. WE USE THE IDEA OF ‘MENTAL
ORGONE UNFOLDING’ TO EXPLAIN THIS
OSCULATION:**

**ONCE UNFOLDING HAS TAKEN PLACE AN
INFINITE REPEAT OF SMALLER SYSTEMS WILL
BE TRIGGERED!**

**AN ATTITUDE OF CHAIN COLLABORATION WILL
BE FORMED THAT NEGATES THE MANY
PROBLEMS OF THIS WORLD!”**

IMAGES TAKEN FROM THE TEXT OF THE 'ORGONISE' PAMPHLET



MAGNETIC PULSE GENERATOR

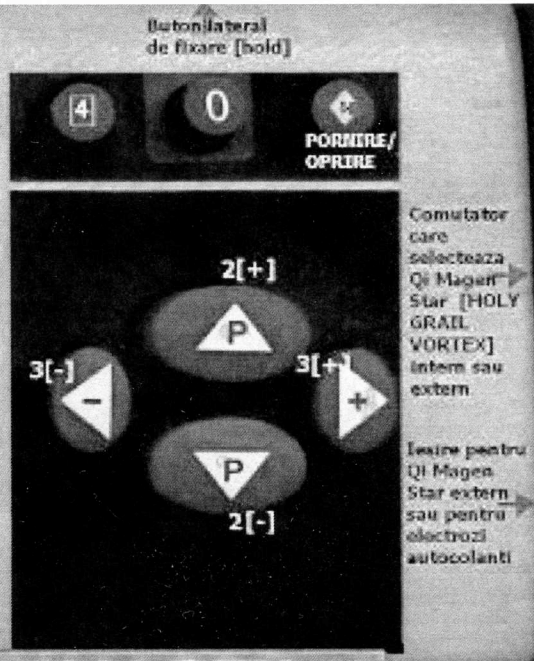
proiectat și realizat de Dan Mirahorian

GENERATOR DE PULSURI MAGNETICE TERAPEUTICE



AFISAJ

24 - DEPRESIE ANXIETATE
36 - ECHILIBRARE GENERALA
37 - ENERGIZARE REVITALIZARE
42 - GRIPA AVIARA
43 - HIPERTENSIUNE-14 - HIPOTENSIUNE
47 - IMPOTENTA
49 - INSOMNIE
63 - REGENERARE OSOASA
71 - SCLEROZA MULTIPLA
78 - REPARARE ADN
225 - SET GENERAL DIABET



MOD DE PUNERE IN FUNCTIUNE

PENTRU PORNIRE SE APASA BUTONUL 1 ●
RITMUL TERAPEUTIC DORIT SE SELECȚIAZĂ FOLOSIND BUTONUL 2[P]
APOI SE APASA 1●
BUTONUL 3[+ -] REGLEAZĂ INTENSITATEA SEMNALULUI
PENTRU OPRIRE SE ȚINE APASAT 1● 3 SEC
PENTRU A REPETA UN SET DE PULSURI SE FOLOSESTE BUTONUL 4[+] + 1●

LISTA PULSURILOR TERAPEUTICE PRODUSE DE QI MAGEN 99

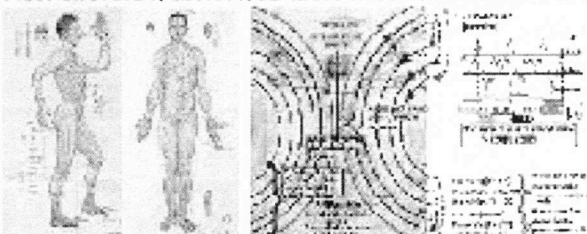
- | | |
|---|----------------------------------|
| 01 - Abcese secundare | 46 - HIPOTENSIUNE |
| 02 - Abcese acnee | 47 - IMPOTENTA |
| 03 - Acnee secundara | 48 - INCARCARE DIABETICA |
| 04 - Acnee vulgaris | 49 - INSOMNIE |
| 05 - Aconit, stimulare limfocite | 50 - INSUFICIENTA PANCREAS |
| 06 - Adenovirus, raceli, gripa | 51 - INSUFICIENTA RENALA |
| 07 - Alopecie diabetica** | 52 - LEPTOSPIROZA |
| 08 - Anexita, inflamatie ovare,
inflamatie trompe uterine | 53 - MALADIE GENERALA |
| 09 - Angina pectorala | 54 - NOCARDIA ASIEBIDIOS* |
| 10 - Antiseptic si stimulare sistem
circulator | 55 - OBUSEALA GENERALA |
| 11 - Antiseptic general | 56 - Obeseala varstei inaintate |
| 12 - Arnica | 57 - PARALIZIE HONORATICA* |
| 13 - Arsenic alb. | 58 - PARAZITI 1 |
| 14 - Arterioscleroza | 59 - PARAZITI 2 |
| 15 - Arterioscleroza | 60 - PARAZITI GENERAL |
| 16 - Arterioscleroza | 61 - PARAZITI INTESTINALI FLUKES |
| 17 - Arterioscleroza | 62 - PARAZITI PANCREAS |
| 18 - Autointoxicatie** | 63 - PARKINSON DISEASE |
| 19 - Autointoxicatie | 64 - PARKINSON TREMOR |
| 20 - Autointoxicatie | 65 - PIETRE VB |
| 21 - CALMARE | 66 - PROFILAXIE GENERALA |
| 22 - CHLAMYDIA PNEUMONIE* | 67 - PROGRAM DE DETOXIFIARE |
| 23 - DEPRESIE | 68 - Rani, camp perturbat |
| 24 - DEPRESIE ANXIETATE | 69 - REGENERARE OSOASA |
| 25 - DEPRESIE ANXIETATE TREMUR SLABIRE | 70 - REPARARE ADN |
| 26 - DETASARE EMOTIONALA DE MALADIE** | 71 - SCLEROZA MULTIPLA |
| 27 - DETOXIFIARE[pesticide, benzen,
Hg(mercur), Pb(plumb), formaldehida..] | 72 - SCLEROZA MULTIPLA TREMUR |
| 28 - DIABET SET GENERAL** | 73 - STAZA CIRCULATIE SANGUINA |
| 29 - DIABET 1 | 74 - STAZA SISTEM LIMFATIC |
| 30 - DIABET 2 [SECUNDAR] | 75 - STAZA LIMFATICA SECUNDARA |
| 31 - DIABET 3 [TERTIAR] | 76 - Stimulare adrenalina |
| 32 - DIABET INFECTIE | 77 - STIMULARE SISTEM IMUNITAR |
| 33 - Diabet-Pierdere par | 78 - Stimulare sistem imunitar |
| 34 - DISTONIE VB OSTEITA | 79 - Stimulare sistem imunitar |
| 35 - DURERE ACUTA | 80 - Stimulare sistem imunitar |
| 36 - ECHILIBRARE GENERALA | 81 - Stimulare sistem imunitar |
| 37 - ENERGIZARE REVITALIZARE | 82 - Stimulare sistem imunitar |
| 38 - EURYTREMA PANCREATICUM 1 | 83 - Stimulare sistem imunitar |
| 39 - EURYTREMA PANCREATICUM 2 | 84 - Stimulare sistem imunitar |
| 40 - EURYTREMA PANCREATICUM 3 | 85 - TONIFICARE FICAT |
| 41 - GINGIVITA | 86 - TONIFICARE RINICHI |
| 42 - GRIPA AVIARA ASIATICA | 87 - TONIFICARE SEXUALA BARBATI |
| 43 - GRIPA AVIARA ASIATICA | 88 - TONIFICARE SISTEM LIMFATIC |
| 44 - HEPATITA GENERAL | 89 - TULBURARI CIRCULATORII |
| 45 - HIPERTENSIUNE | 90 - VINDECARE RANI |

QiMAGEN 99

MOD DE UTILIZARE

DISPOZITIVUL QI MAGEN SE ȚINE TIMP DE 30-45 MINUTE
de 3 ORI/ZI PE ZONA INDICATA

PUNCTELE DE ACUPUNCTURA ACTIVE SUNT PREZENTATE
IN ATLASUL TERAPEUTIC AL MERIDIANELOR DE
ACUPUNCTURA [CDROM] ELABORAT DE DAN MIRAHORIAN



Qi Magen 99 produce la cerere pulsuri terapeutice
sublimare magice si alte pulsuri necesare in alte
utilizari [conterg resterna polente, resterna similar]

*Dobanda specifică acestei maladii se folosește în
scleroza multiplă și în maladia Parkinson alături de
celălalt pentru repararea ADN

**În maladia diabetica se folosesc toate pulsurile
verde, albastru, paraziți

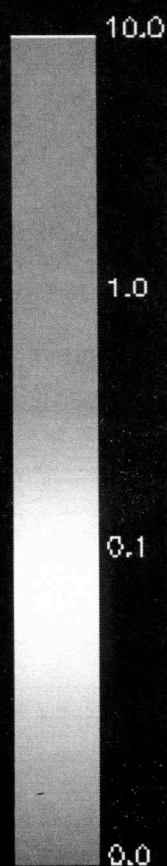
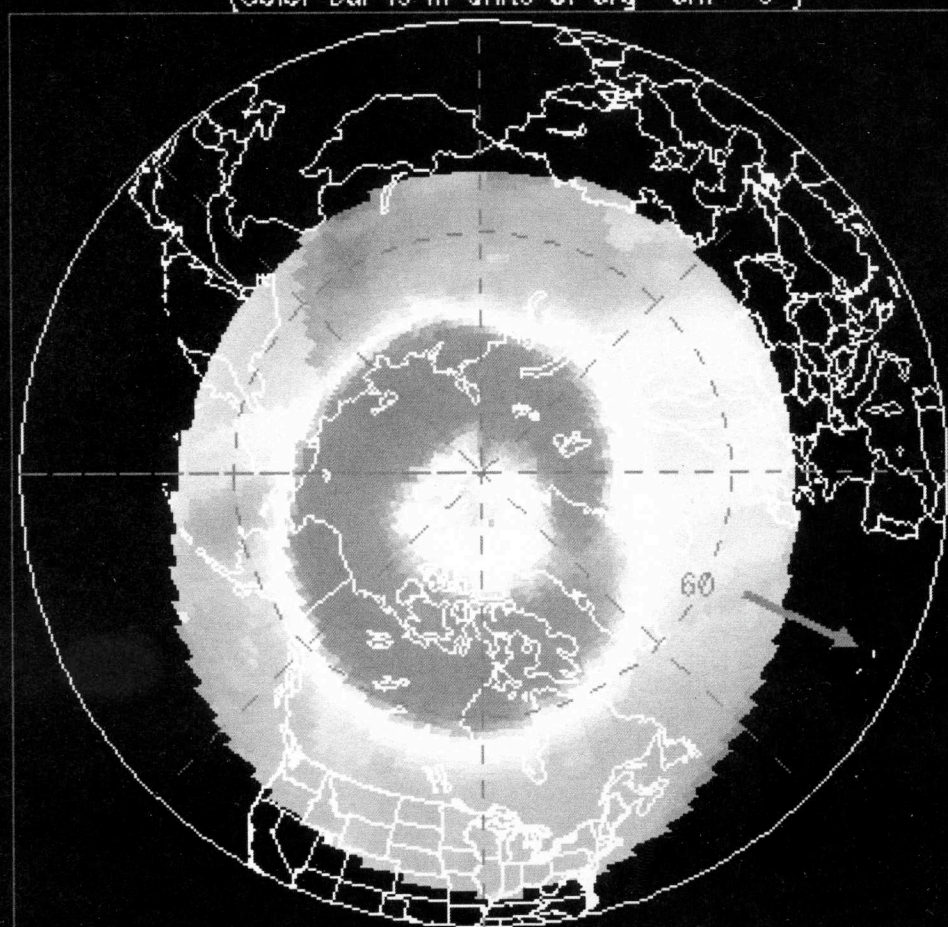
PENTRU DETALII PRIVIND ACTIVITATEA
AUTORULUI, PRECUM SI PENTRU INFORMATII
PRIVIND QI MAGEN, GRAAI STAR [QI MAGEN
STAR], CD RELAXARE PILOTATA, VA RUGAM
INTRATI PE ADRESELE DE SITE INTERNET
INDICATE MAI JOS:
<http://www.danmirahorian.com/>
<http://www.danmirahorian.ro/>

prof.dr.ing.Dan Olaru Mirahorian

Address: OP 77-CP 58, București, România
P.O.Box 77-58, Bucharest, ROMANIA
Phone: 0723490341; tel/fax: +4021 3231564
e-mail: danmirahorian@yahoo.com
<http://www.danmirahorian.ro/>
<http://www.danmirahorian.com/>

STATISTICAL AURORAL OVAL
Extrapolated from NOAA-17
Current time: 2009 November 25 13:41UT
(Color bar is in units of $\text{erg} \cdot \text{cm}^{-2} \cdot \text{s}^{-1}$)

Activity level 6
 $n=0.83$



NOAA Space Weather Prediction Center

WHAT WERE THEY DRIVING AT?
THE ASSERTIONS SEEM UNCANNY TO US NOW AND IT IS
DIFFICULT NOT TO BE EXCITED BY WHAT THIS LINK MIGHT
SIGNIFY. STILL THERE IS A LARGE POSSIBILITY THAT THESE WERE
FANTASISTS. THAT THEIR SOMEWHAT DUBIOUS MANIFESTO
(RIDDLED AS IT IS WITH QUESTIONABLE TERMINOLOGY) WAS
ANTICIPATING NOTHING.

IT IS BELIEVED THAT IT WILL PROVE VERY DIFFICULT TO FIND
EVIDENCE OF A GENUINE ANTICIPATION OF SIGNA – SOMA
TRANSFER IN WRITTEN OR ENCODED DIGITAL FORM, DUE TO THE
VERY DIRECT NATURE OF THE PROCESS AND THE DIFFICULTY OF
ARTICULATING SUCH A 'SUBTLE' HAPPENING.

DAVID BOHM, PHYSICIST, WORKING PRE-END YEARS 1951-1992

ALTHOUGH BOHM DID NOT FORESEE SIGNA – SOMA TRANSFER
AS WE KNOW IT, HE DEVELOPED A PICTURE OF THE TRUE
QUANTUM NATURE OF THINGS THAT WAS CLOSER TO THE MARK
THAN ANY OTHER THEORIES OF HIS TIME.

THANK YOU FOR ATTENDING